

Product Name: PLGF Rabbit Polyclonal Antibody
Catalog #: APRab00202



Summary

Production Name	PLGF Rabbit Polyclonal Antibody
Description	Primary antibody
Host	Rabbit
Application	WB
Reactivity	Human

Performance

Conjugation	Unconjugated
Modification	Unmodified
Isotype	IgG
Clonality	Polyclonal Antibody
Form	Liquid
Storage	Store at 4°C short term. Aliquot and store at -20°C long term. Avoid freeze/thaw cycles.
Buffer	Rabbit IgG in phosphate buffered saline , pH 7.4, 150mM NaCl, 0.02% sodium azide and 50% glycerol.
Purification	Affinity Chromatography

Immunogen

Gene Name	PGF
Alternative Names	Pgf; PGFL; PIGF; Placenta growth factor; Placental growth factor; vascular endothelial growth factor related protein; PIGF; PIGF2; SHGC 10760
Gene ID	5228
SwissProt ID	P49763

Application

Dilution Ratio	WB: 1/500-1/1000
Molecular Weight	Calculated MW: 25 kDa; Observed MW: 25 kDa

Product Name: PLGF Rabbit Polyclonal Antibody
Catalog #: APRab00202



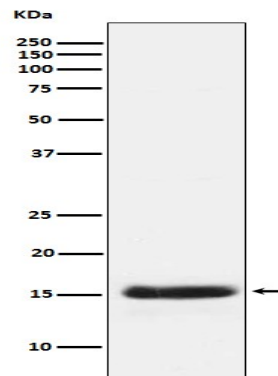
Background

Growth factor active in angiogenesis and endothelial cell growth, stimulating their proliferation and migration. It binds to the receptor FLT1/VEGFR-1. Isoform PIGF-2 binds NRP1/neuropilin-1 and NRP2/neuropilin-2 in a heparin-dependent manner.

Research Area

Cardiovascular

Image Data



Western blot analysis of PLGF in Human PLGF Recombinant protein using PLGF antibody.

Note

For research use only.