

Summary

Production Name	Podoplanin Rabbit Polyclonal Antibody
Description	Primary antibody
Host	Rabbit
Application	WB,IHC-P
Reactivity	Human

Performance

Conjugation	Unconjugated
Modification	Unmodified
Isotype	IgG
Clonality	Polyclonal Antibody
Form	Liquid
Storage	Store at 4°C short term. Aliquot and store at -20°C long term. Avoid freeze/thaw cycles.
Buffer	Rabbit IgG in phosphate buffered saline , pH 7.4, 150mM NaCl, 0.02% sodium azide and 50% glycerol.
Purification	Affinity Chromatography

Immunogen

Gene Name	PDPN
Alternative Names	T1A; GP36; GP40; Gp38; OTS8; T1A2; T11A; T1A-2; AGGRUS; HT1A-1; PA2.26
Gene ID	10630
SwissProt ID	Q86YL7

Application

Dilution Ratio	WB: 1/500-1/1000 IHC: 1/50-1/100
Molecular Weight	Calculated MW: 17 kDa; Observed MW: 36 kDa

Background

Product Name: Podoplanin Rabbit Polyclonal Antibody
Catalog #: APRab00179

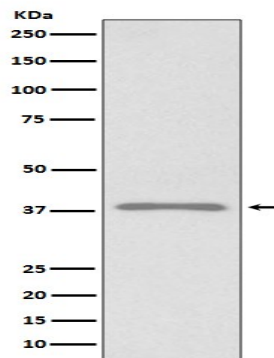


May be involved in cell migration and/or actin cytoskeleton organization. When expressed in keratinocytes, induces changes in cell morphology with transfected cells showing an elongated shape, numerous membrane protrusions, major reorganization of the actin cytoskeleton, increased motility and decreased cell adhesion. Required for normal lung cell proliferation and alveolus formation at birth. Induces platelet aggregation.

Research Area

Cardiovascular

Image Data



Western blot analysis of Podoplanin in 293T lysates using Podoplanin antibody.

Note

For research use only.