

**Product Name: Cytochrome C Rabbit Polyclonal Antibody**  
**Catalog #: APRab00095**

---

## Summary

<b>Production Name</b>	Cytochrome C Rabbit Polyclonal Antibody
<b>Description</b>	Primary antibody
<b>Host</b>	Rabbit
<b>Application</b>	WB,IHC-P,ICC/IF,IP
<b>Reactivity</b>	Human,Mouse,Rat

## Performance

<b>Conjugation</b>	Unconjugated
<b>Modification</b>	Unmodified
<b>Isotype</b>	IgG
<b>Clonality</b>	Polyclonal Antibody
<b>Form</b>	Liquid
<b>Storage</b>	Store at 4°C short term. Aliquot and store at -20°C long term. Avoid freeze/thaw cycles.
<b>Buffer</b>	Rabbit IgG in phosphate buffered saline , pH 7.4, 150mM NaCl, 0.02% sodium azide and 50% glycerol.
<b>Purification</b>	Affinity Chromatography

## Immunogen

<b>Gene Name</b>	CYCS
<b>Alternative Names</b>	CYCS; CYC; Cytochrome c
<b>Gene ID</b>	54205
<b>SwissProt ID</b>	P99999

## Application

<b>Dilution Ratio</b>	WB: 1/500-1/1000 IHC: 1/50-1/100 IF: 1/50-1/200 IP: 1/20
<b>Molecular Weight</b>	Calculated MW: 12 kDa; Observed MW: 12 kDa

**Product Name: Cytochrome C Rabbit Polyclonal Antibody**  
**Catalog #: APRab00095**

---

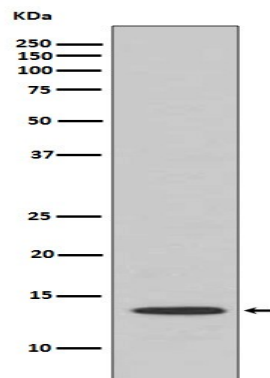
## Background

CYCS Electron carrier protein. The oxidized form of the cytochrome c heme group can accept an electron from the heme group of the cytochrome c1 subunit of cytochrome reductase. Cytochrome c then transfers this electron to the cytochrome oxidase complex, the final protein carrier in the mitochondrial electron-transport chain.

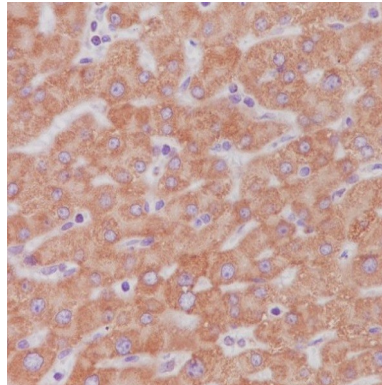
## Research Area

Cardiovascular

## Image Data



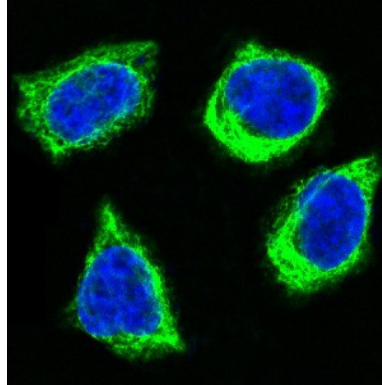
Western blot analysis of Cytochrome C in Human kidney lysates using Cytochrome C antibody.



Immunohistochemistry analysis of paraffin-embedded Human liver using Cytochrome C antibody. High-pressure and temperature Sodium Citrate pH 6.0 was used for antigen retrieval.

**Product Name: Cytochrome C Rabbit Polyclonal  
Antibody**  
**Catalog #: APRab00095**

---



Immunofluorescence analysis of Cytochrome C in HeLa using Cytochrome C antibody.

**Note**

For research use only.