

Summary

Production Name	Chk2 Rabbit Polyclonal Antibody
Description	Primary antibody
Host	Rabbit
Application	WB,IHC-P,ICC/IF,IP
Reactivity	Human

Performance

Conjugation	Unconjugated
Modification	Unmodified
Isotype	IgG
Clonality	Polyclonal Antibody
Form	Liquid
Storage	Store at 4°C short term. Aliquot and store at -20°C long term. Avoid freeze/thaw cycles.
Buffer	Rabbit IgG in phosphate buffered saline , pH 7.4, 150mM NaCl, 0.02% sodium azide and 50% glycerol.
Purification	Affinity Chromatography

Immunogen

Gene Name	CHEK2
Alternative Names	CHEK2; CDS1; CHK2; RAD53; Serine/threonine-protein kinase Chk2; CHK2 checkpoint homolog; Cds1 homolog; Hucds1; hCds1; Checkpoint kinase 2
Gene ID	11200
SwissProt ID	O96017

Application

Dilution Ratio	WB: 1/500-1/1000 IHC: 1/50-1/100 IF: 1/50-1/200 IP: 1/20
Molecular Weight	Calculated MW: 61 kDa; Observed MW: 61 kDa

Product Name: Chk2 Rabbit Polyclonal Antibody
Catalog #: APRab00075



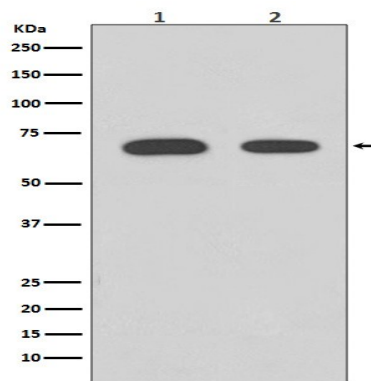
Background

These are known to be preferred sites for phosphorylation by ATM/ATR kinases. After DNA damage by ionizing radiation (IR), UV irradiation, or hydroxyurea treatment, Thr68 and other sites in this region become phosphorylated by ATM/ATR. The SQ/TQ cluster domain, therefore, seems to have a regulatory function.

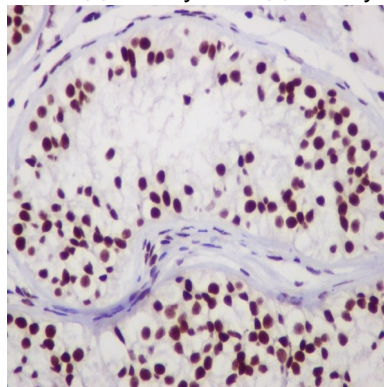
Research Area

Epigenetics and Nuclear Signaling

Image Data

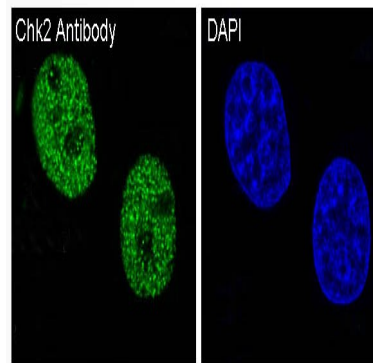


Western blot analysis of Chk2 in (1) HeLa lysates; (2) 293T lysates using Chk2 antibody.



Immunohistochemistry analysis of paraffin-embedded Human testis using Chk2 antibody. High-pressure and temperature Sodium Citrate pH 6.0 was used for antigen retrieval.

Product Name: Chk2 Rabbit Polyclonal Antibody
Catalog #: APRab00075



Immunofluorescence analysis of Chk2 in HeLa using Chk2 antibody.

Note

For research use only.