

Product Name: VPS11 (1S10) Rabbit Monoclonal Antibody
Catalog #: AMRe19826

Summary

Production Name	VPS11 (1S10) Rabbit Monoclonal Antibody
Description	Rabbit Monoclonal Antibody
Host	Rabbit
Application	WB,ELISA
Reactivity	Human,Mouse

Performance

Conjugation	Unconjugated
Modification	Unmodified
Isotype	IgG
Clonality	Monoclonal
Form	Liquid
Storage	Store at 4°C short term. Aliquot and store at -20°C long term. Avoid freeze/thaw cycles.
Buffer	Rabbit IgG in phosphate buffered saline , pH 7.4, 150mM NaCl, 0.02% New type preservative N and 50% glycerol. Store at +4°C short term. Store at -20°C long term. Avoid freeze / thaw cycle.
Purification	Affinity purification

Immunogen

Gene Name	VPS11
Alternative Names	END1; hVPS11; PEP5; PP3476; RNF108; vps11;
Gene ID	55823.0
SwissProt ID	Q9H270.

Application

Dilution Ratio	WB 1:500-1:2000
Molecular Weight	108kDa

Product Name: VPS11 (1S10) Rabbit Monoclonal Antibody
Catalog #: AMRe19826

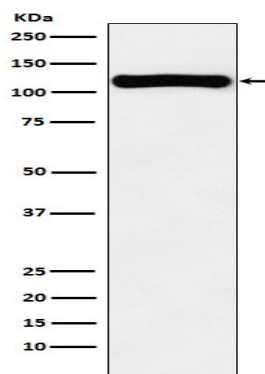


Background

May play a role in vesicle-mediated protein trafficking to lysosomal compartments and in membrane docking/fusion reactions of late endosomes/lysosomes. Plays a role in vesicle-mediated protein trafficking to lysosomal compartments including the endocytic membrane transport and autophagic pathways. Believed to act as a core component of the putative HOPS and CORVET endosomal tethering complexes which are proposed to be involved in the Rab5-to-Rab7 endosome conversion probably implicating MON1A/B, and via binding SNAREs and SNARE complexes to mediate tethering and docking events during SNARE-mediated membrane fusion. The HOPS complex is proposed to be recruited to Rab7 on the late endosomal membrane and to regulate late endocytic, phagocytic and autophagic traffic towards lysosomes. The CORVET complex is proposed to function as a Rab5 effector to mediate early endosome fusion probably in specific endosome subpopulations (PubMed: [11382755](http://www.uniprot.org/citations/11382755), PubMed: [23351085](http://www.uniprot.org/citations/23351085), PubMed: [24554770](http://www.uniprot.org/citations/24554770), PubMed: [25266290](http://www.uniprot.org/citations/25266290), PubMed: [25783203](http://www.uniprot.org/citations/25783203)). Required for fusion of endosomes and autophagosomes with lysosomes (PubMed: [25783203](http://www.uniprot.org/citations/25783203)). Involved in cargo transport from early to late endosomes and required for the transition from early to late endosomes (PubMed: [21148287](http://www.uniprot.org/citations/21148287)). Involved in the retrograde Shiga toxin transport (PubMed: [23593995](http://www.uniprot.org/citations/23593995)).

Research Area

Image Data



Western blot analysis of VPS11 expression in K562 cell lysate.

**Product Name: VPS11 (1S10) Rabbit Monoclonal
Antibody**
Catalog #: AMRe19826



Note

For research use only.