

Product Name: TRAF2 (15T4) Rabbit Monoclonal Antibody
Catalog #: AMRe19183

Summary

Production Name	TRAF2 (15T4) Rabbit Monoclonal Antibody
Description	Rabbit Monoclonal Antibody
Host	Rabbit
Application	WB,ELISA
Reactivity	Human

Performance

Conjugation	Unconjugated
Modification	Unmodified
Isotype	IgG
Clonality	Monoclonal
Form	Liquid
Storage	Store at 4°C short term. Aliquot and store at -20°C long term. Avoid freeze/thaw cycles.
Buffer	Rabbit IgG in phosphate buffered saline , pH 7.4, 150mM NaCl, 0.02% New type preservative N and 50% glycerol. Store at +4°C short term. Store at -20°C long term. Avoid freeze / thaw cycle.
Purification	Affinity purification

Immunogen

Gene Name	TRAF2
Alternative Names	TNF receptor associated factor 2; TRAF2; TRAP; TRAP3;
Gene ID	7186.0
SwissProt ID	Q12933.

Application

Dilution Ratio	WB 1:500-1:2000
Molecular Weight	56kDa

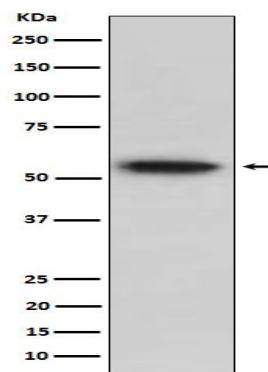
Product Name: TRAF2 (15T4) Rabbit Monoclonal Antibody
Catalog #: AMRe19183

Background

Regulates activation of NF-kappa-B and JNK and plays a central role in the regulation of cell survival and apoptosis. Regulates activation of NF-kappa-B and JNK and plays a central role in the regulation of cell survival and apoptosis. Required for normal antibody isotype switching from IgM to IgG. Has E3 ubiquitin-protein ligase activity and promotes 'Lys-63'-linked ubiquitination of target proteins, such as BIRC3, RIPK1 and TICAM1. Is an essential constituent of several E3 ubiquitin-protein ligase complexes, where it promotes the ubiquitination of target proteins by bringing them into contact with other E3 ubiquitin ligases. Regulates BIRC2 and BIRC3 protein levels by inhibiting their autoubiquitination and subsequent degradation; this does not depend on the TRAF2 RING-type zinc finger domain. Plays a role in mediating activation of NF-kappa-B by EIF2AK2/PKR. In complex with BIRC2 or BIRC3, promotes ubiquitination of IKKBE.

Research Area

Image Data



Western blot analysis of TRAF2 expression in Raji cell lysate.

Note

For research use only.