

Product Name: S100 alpha 6 (12M1) Rabbit Monoclonal Antibody
Catalog #: AMRe17461

Summary

Production Name	S100 alpha 6 (12M1) Rabbit Monoclonal Antibody
Description	Rabbit Monoclonal Antibody
Host	Rabbit
Application	WB,ELISA
Reactivity	Human,Mouse,Rat

Performance

Conjugation	Unconjugated
Modification	Unmodified
Isotype	IgG
Clonality	Monoclonal
Form	Liquid
Storage	Store at 4°C short term. Aliquot and store at -20°C long term. Avoid freeze/thaw cycles.
Buffer	Rabbit IgG in phosphate buffered saline , pH 7.4, 150mM NaCl, 0.02% New type preservative N and 50% glycerol. Store at +4°C short term. Store at -20°C long term. Avoid freeze / thaw cycle.
Purification	Affinity purification

Immunogen

Gene Name	S100A6
Alternative Names	Protein S100-A6; Calcyclin; MLN 4; PRA; CACY; CABP; 5B10;
Gene ID	6277.0
SwissProt ID	P06703.

Application

Dilution Ratio	WB 1:500-1:2000
Molecular Weight	10kDa

Product Name: S100 alpha 6 (12M1) Rabbit Monoclonal Antibody
Catalog #: AMRe17461

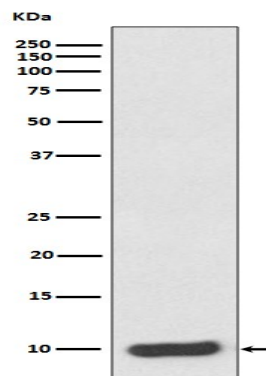


Background

S100A6 (calcylin) is involved in a number of cellular processes, including exocytosis and cell cycle regulation. In addition, S100A6 interacts with a number of proteins such as SIP, GAPDH, and annexins in a calcium-dependent fashion. Research studies demonstrate that a down regulation of corresponding S100A6 gene expression causes a decrease in cell proliferation. May function as calcium sensor and modulator, contributing to cellular calcium signaling. May function by interacting with other proteins, such as TPR-containing proteins, and indirectly play a role in many physiological processes such as the reorganization of the actin cytoskeleton and in cell motility. Binds 2 calcium ions. Calcium binding is cooperative.

Research Area

Image Data



Western blot analysis of S100 alpha 6 expression in HeLa cell lysate.

Note

For research use only.