

Product Name: MMP2 (12D11) Rabbit Monoclonal Antibody
Catalog #: AMRe13986



Summary

Production Name	MMP2 (12D11) Rabbit Monoclonal Antibody
Description	Rabbit Monoclonal Antibody
Host	Rabbit
Application	WB
Reactivity	Human,Mouse,Rat

Performance

Conjugation	Unconjugated
Modification	Unmodified
Isotype	IgG
Clonality	Monoclonal
Form	Liquid
Storage	Store at 4°C short term. Aliquot and store at -20°C long term. Avoid freeze/thaw cycles.
Buffer	Supplied in 50mM Tris-Glycine(pH 7.4), 0.15M NaCl, 40%Glycerol, 0.01% New type preservative N and 0.05% BSA.
Purification	Affinity purification

Immunogen

Gene Name	MMP2
Alternative Names	CLG 4; CLG 4A; CLG4; CLG4A; Gelatinase A; Gelatinase alpha; Gelatinase neutrophil; MMP 2; MMP II; MMP2; MONA; PEX; TBE 1;
Gene ID	4313.0
SwissProt ID	P08253.A synthetic peptide of human MMP2

Application

Dilution Ratio	WB: 1:1000-1:5000
Molecular Weight	74kDa

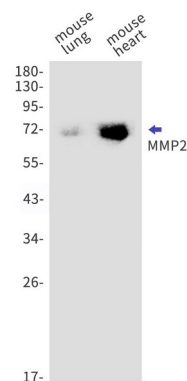
Product Name: MMP2 (12D11) Rabbit Monoclonal Antibody
Catalog #: AMRe13986

Background

Ubiquitous metalloproteinase that is involved in diverse functions such as remodeling of the vasculature, angiogenesis, tissue repair, tumor invasion, inflammation, and atherosclerotic plaque rupture. As well as degrading extracellular matrix proteins, can also act on several nonmatrix proteins such as big endothelial 1 and beta-type CGRP promoting vasoconstriction. Ubiquitous metalloproteinase that is involved in diverse functions such as remodeling of the vasculature, angiogenesis, tissue repair, tumor invasion, inflammation, and atherosclerotic plaque rupture. As well as degrading extracellular matrix proteins, can also act on several nonmatrix proteins such as big endothelial 1 and beta- type CGRP promoting vasoconstriction. Also cleaves KISS at a Gly-|-Leu bond. Appears to have a role in myocardial cell death pathways. Contributes to myocardial oxidative stress by regulating the activity of GSK3beta. Cleaves GSK3beta in vitro. Involved in the formation of the fibrovascular tissues in association with MMP14. [Isoform 2]: Mediates the proteolysis of CHUK/IKKA and initiates a primary innate immune response by inducing mitochondrial- nuclear stress signaling with activation of the pro-inflammatory NF- kappaB, NFAT and IRF transcriptional pathways.

Research Area

Image Data



Western blot detection of MMP2 in mouse lung, mouse heart cell lysates using MMP2 antibody(1:1000 diluted).

Note

For research use only.