

Summary

Production Name	ILK (13L8) Rabbit Monoclonal Antibody
Description	Rabbit Monoclonal Antibody
Host	Rabbit
Application	WB
Reactivity	Human,Mouse,Rat

Performance

Conjugation	Unconjugated
Modification	Unmodified
Isotype	IgG
Clonality	Monoclonal
Form	Liquid
Storage	Store at 4°C short term. Aliquot and store at -20°C long term. Avoid freeze/thaw cycles.
Buffer	Supplied in 50mM Tris-Glycine(pH 7.4), 0.15M NaCl, 40%Glycerol, 0.01% New type preservative N and 0.05% BSA.
Purification	Affinity purification

Immunogen

Gene Name	ILK
Alternative Names	ILK; DKFZp686F1765; P59; ILK1; Integrin linked protein kinas;
Gene ID	3611.0
SwissProt ID	Q13418.A synthetic peptide of human Integrin linked ILK

Application

Dilution Ratio	WB: 1:1000-1:5000
Molecular Weight	51kDa

Background

Integrin-linked kinases (ILKs) couple integrins and growth factors to downstream pathways involved in cell survival, cell

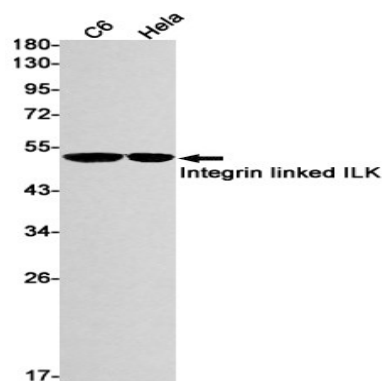
Product Name: ILK (13L8) Rabbit Monoclonal Antibody
Catalog #: AMRe12578



cycle control, cell-cell adhesion and cell motility. ILK functions as a scaffold bridging the extracellular matrix (ECM) and growth factor receptors to the actin cytoskeleton through interactions with integrin, PINCH (which links ILK to the RTKs via Nck2), CH-ILKBP and affixin. Receptor-proximal protein kinase regulating integrin-mediated signal transduction (PubMed:8538749, PubMed:9736715). May act as a mediator of inside-out integrin signaling (PubMed:10712922). Focal adhesion protein part of the complex ILK-PINCH (PubMed:10712922). This complex is considered to be one of the convergence points of integrin- and growth factor-signaling pathway (PubMed:10712922). Could be implicated in mediating cell architecture, adhesion to integrin substrates and anchorage-dependent growth in epithelial cells (PubMed:10712922). Regulates cell motility by forming a complex with PARVB (PubMed:32528174). Phosphorylates beta-1 and beta-3 integrin subunit on serine and threonine residues, but also AKT1 and GSK3B (PubMed:8538749, PubMed:9736715).

Research Area

Image Data



Western blot detection of Integrin linked ILK in C6,HeLa cell lysates using Integrin linked ILK antibody(1:1000 diluted).

Note

For research use only.