

**Product Name: Galectin 3 (14F17) Rabbit Monoclonal Antibody**  
**Catalog #: AMRe11267**



## Summary

<b>Production Name</b>	Galectin 3 (14F17) Rabbit Monoclonal Antibody
<b>Description</b>	Rabbit Monoclonal Antibody
<b>Host</b>	Rabbit
<b>Application</b>	WB
<b>Reactivity</b>	Human,Rat

## Performance

<b>Conjugation</b>	Unconjugated
<b>Modification</b>	Unmodified
<b>Isotype</b>	IgG
<b>Clonality</b>	Monoclonal
<b>Form</b>	Liquid
<b>Storage</b>	Store at 4°C short term. Aliquot and store at -20°C long term. Avoid freeze/thaw cycles.
<b>Buffer</b>	Supplied in 50mM Tris-Glycine(pH 7.4), 0.15M NaCl, 40%Glycerol, 0.01% New type preservative N and 0.05% BSA.
<b>Purification</b>	Affinity purification

## Immunogen

<b>Gene Name</b>	LGALS3
<b>Alternative Names</b>	CBP35; Gal-3; 35 kDa lectin; GALBP; IgE-binding protein; Laminin-binding protein; Lectin L-29; Mac-2 antigen; LGALS3; MAC2; Galectin 3; Galectin3;
<b>Gene ID</b>	3958.0
<b>SwissProt ID</b>	P17931.A synthetic peptide of human Galectin 3

## Application

<b>Dilution Ratio</b>	WB: 1:1000-1:5000
<b>Molecular Weight</b>	26kDa

**Product Name: Galectin 3 (14F17) Rabbit Monoclonal Antibody**  
**Catalog #: AMRe11267**

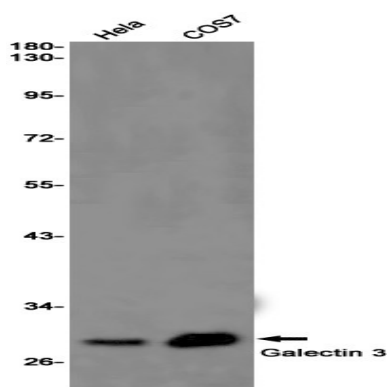


## Background

Galactose-specific lectin which binds IgE. May mediate with the alpha-3, beta-1 integrin the stimulation by CSPG4 of endothelial cells migration. Together with DMBT1, required for terminal differentiation of columnar epithelial cells during early embryogenesis. Galactose-specific lectin which binds IgE. May mediate with the alpha-3, beta-1 integrin the stimulation by CSPG4 of endothelial cells migration. Together with DMBT1, required for terminal differentiation of columnar epithelial cells during early embryogenesis (By similarity). In the nucleus: acts as a pre-mRNA splicing factor. Involved in acute inflammatory responses including neutrophil activation and adhesion, chemoattraction of monocytes macrophages, opsonization of apoptotic neutrophils, and activation of mast cells. Together with TRIM16, coordinates the recognition of membrane damage with mobilization of the core autophagy regulators ATG16L1 and BECN1 in response to damaged endomembranes.

## Research Area

## Image Data



Western blot detection of Galectin 3 in HeLa, COS7 cell lysates using Galectin 3 antibody (1:1000 diluted).

## Note

For research use only.