

**Product Name: Fibrinogen alpha chain (4J4) Rabbit
Monoclonal Antibody
Catalog #: AMRe10970**

Summary

Production Name	Fibrinogen alpha chain (4J4) Rabbit Monoclonal Antibody
Description	Rabbit Monoclonal Antibody
Host	Rabbit
Application	WB,ELISA
Reactivity	Human,Mouse,Rat

Performance

Conjugation	Unconjugated
Modification	Unmodified
Isotype	IgG
Clonality	Monoclonal
Form	Liquid
Storage	Store at 4°C short term. Aliquot and store at -20°C long term. Avoid freeze/thaw cycles.
Buffer	Rabbit IgG in phosphate buffered saline , pH 7.4, 150mM NaCl, 0.02% New type preservative N and 50% glycerol. Store at +4°C short term. Store at -20°C long term. Avoid freeze / thaw cycle.
Purification	Affinity purification

Immunogen

Gene Name	FGA
Alternative Names	Fba5e; FGA; Fib; Fib2; Fibrinopeptide A;
Gene ID	2243.0
SwissProt ID	P02671.

Application

Dilution Ratio	WB 1:500-1:2000
Molecular Weight	95kDa

**Product Name: Fibrinogen alpha chain (4J4) Rabbit
Monoclonal Antibody
Catalog #: AMRe10970**

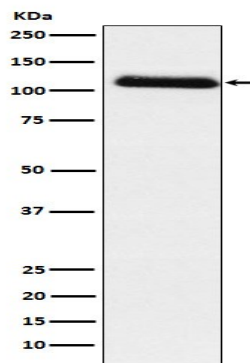


Background

Fibrinogen has a double function: yielding monomers that polymerize into fibrin and acting as a cofactor in platelet aggregation. Cleaved by the protease thrombin to yield monomers which, together with fibrinogen beta (FGB) and fibrinogen gamma (FGG), polymerize to form an insoluble fibrin matrix. Fibrin has a major function in hemostasis as one of the primary components of blood clots. In addition, functions during the early stages of wound repair to stabilize the lesion and guide cell migration during re-epithelialization. Was originally thought to be essential for platelet aggregation, based on in vitro studies using anticoagulated blood. However, subsequent studies have shown that it is not absolutely required for thrombus formation in vivo. Enhances expression of SELP in activated platelets via an ITGB3-dependent pathway. Maternal fibrinogen is essential for successful pregnancy. Fibrin deposition is also associated with infection, where it protects against IFNG-mediated hemorrhage. May also facilitate the immune response via both innate and T-cell mediated pathways.

Research Area

Image Data



Western blot analysis of Fibrinogen alpha chain expression in Human plasma lysate.

Note

For research use only.