

**Product Name: Cytokeratin 20 (8W19) Rabbit  
Monoclonal Antibody  
Catalog #: AMRe09742**

---

## Summary

<b>Production Name</b>	Cytokeratin 20 (8W19) Rabbit Monoclonal Antibody
<b>Description</b>	Rabbit Monoclonal Antibody
<b>Host</b>	Rabbit
<b>Application</b>	WB,ELISA
<b>Reactivity</b>	Human,Rat

## Performance

<b>Conjugation</b>	Unconjugated
<b>Modification</b>	Unmodified
<b>Isotype</b>	IgG
<b>Clonality</b>	Monoclonal
<b>Form</b>	Liquid
<b>Storage</b>	Store at 4°C short term. Aliquot and store at -20°C long term. Avoid freeze/thaw cycles.
<b>Buffer</b>	Rabbit IgG in phosphate buffered saline , pH 7.4, 150mM NaCl, 0.02% New type preservative N and 50% glycerol. Store at +4°C short term. Store at -20°C long term. Avoid freeze / thaw cycle.
<b>Purification</b>	Affinity purification

## Immunogen

<b>Gene Name</b>	KRT20
<b>Alternative Names</b>	CD20; CK-20; CK20; cytokeratin 20; Cytokeratin-20; K1C20; K20; keratin 20; Keratin, type I cytoskeletal 20; Keratin-20; KRT20; KRT21; MGC35423; Protein IT;
<b>Gene ID</b>	54474.0
<b>SwissProt ID</b>	P35900.

## Application

<b>Dilution Ratio</b>	WB 1:500-1:2000
<b>Molecular Weight</b>	48kDa

**Product Name: Cytokeratin 20 (8W19) Rabbit  
Monoclonal Antibody  
Catalog #: AMRe09742**

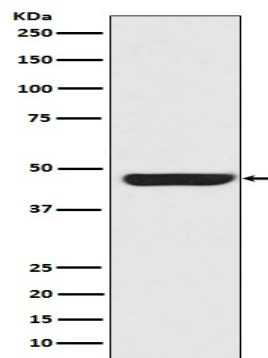
---

## Background

Intermediate-sized filament (IF) protein designated cytokeratin (CK) 20 is a major cellular protein of mature enterocytes and goblet cells commonly found in mucosal epithelium of the mammalian gastrointestinal tract. Results strongly suggest that transcriptional regulation of keratin genes in the intestinal epithelium occurs at the level of both immature and terminally differentiated epithelial cells, and is tightly regulated during both fetal development and crypt-to-villus differentiation of the intestinal epithelium. Plays a significant role in maintaining keratin filament organization in intestinal epithelia. When phosphorylated, plays a role in the secretion of mucin in the small intestine (By similarity).

## Research Area

## Image Data



Western blot analysis of Cytokeratin 20 expression in SW480 cell lysate.

## Note

For research use only.