

## Summary

<b>Production Name</b>	STAT3 Rabbit Monoclonal Antibody
<b>Description</b>	Recombinant Rabbit Monoclonal antibody
<b>Host</b>	Rabbit
<b>Application</b>	WB,IHC-P,ICC/IF
<b>Reactivity</b>	Human,Mouse,Rat

## Performance

<b>Conjugation</b>	Unconjugated
<b>Modification</b>	Unmodified
<b>Isotype</b>	IgG
<b>Clonality</b>	Monoclonal Antibody
<b>Form</b>	Liquid
<b>Storage</b>	Store at 4°C short term. Aliquot and store at -20°C long term. Avoid freeze/thaw cycles.
<b>Buffer</b>	Rabbit IgG in phosphate buffered saline , pH 7.4, 150mM NaCl, 0.02% sodium azide and 50% glycerol.
<b>Purification</b>	Affinity Chromatography

## Immunogen

<b>Gene Name</b>	STAT3
<b>Alternative Names</b>	STAT3; APRF; Signal transducer and activator of transcription 3; Acute-phase response factor
<b>Gene ID</b>	6774
<b>SwissProt ID</b>	P40763

## Application

<b>Dilution Ratio</b>	WB: 1/500-1/1000 IHC: 1/50-1/100 IF: 1/50-1/200
<b>Molecular Weight</b>	Calculated MW: 88 kDa; Observed MW: 88 kDa

**Product Name: STAT3 Rabbit Monoclonal Antibody**  
**Catalog #: AMRe04144**



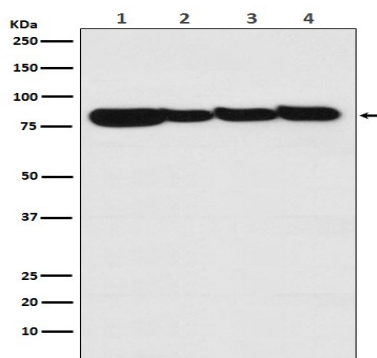
## Background

The protein encoded by this gene is a member of the STAT protein family. In response to cytokines and growth factors, STAT family members are phosphorylated by the receptor associated kinases, and then form homo- or heterodimers that translocate to the cell nucleus where they act as transcription activators.

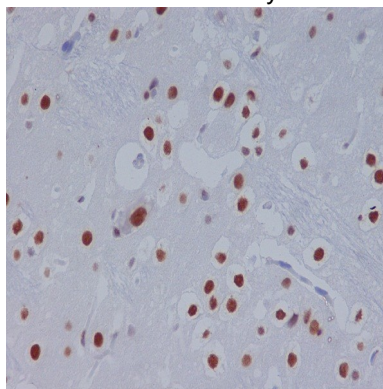
## Research Area

Signal Transduction

## Image Data

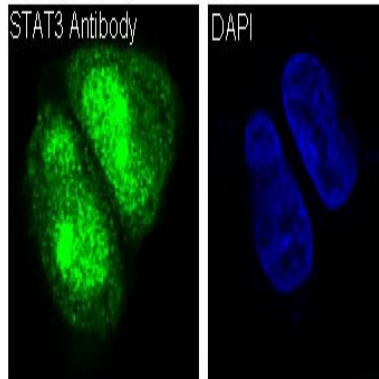


Western blot analysis of STAT3 in (1) A431 lysates; (2) Human liver lysates; (3) mouse heart lysates; (4) rat brain lysates using STAT3 antibody.



Immunohistochemistry analysis of paraffin-embedded rat brain using STAT3 antibody. High-pressure and temperature Sodium Citrate pH 6.0 was used for antigen retrieval.

**Product Name: STAT3 Rabbit Monoclonal Antibody**  
**Catalog #: AMRe04144**



Immunofluorescence analysis of STAT3 in HeLa treated with IFNalpha using STAT3 antibody.

**Note**

For research use only.