

Summary

Production Name	Rab5 Rabbit Monoclonal Antibody
Description	Recombinant Rabbit Monoclonal antibody
Host	Rabbit
Application	WB,IHC-F,IHC-P,ICC/IF,IP
Reactivity	Human,Mouse,Rat

Performance

Conjugation	Unconjugated
Modification	Unmodified
Isotype	IgG
Clonality	Monoclonal Antibody
Form	Liquid
Storage	Store at 4°C short term. Aliquot and store at -20°C long term. Avoid freeze/thaw cycles.
Buffer	50mM Tris-Glycine(pH 7.4), 0.15M NaCl, 40% Glycerol, 0.01% Sodium azide and 0.05% BSA
Purification	Affinity Purified

Immunogen

Gene Name	RAB5A
Alternative Names	RAB5A; RAB5; RAS associated protein RAB5A; Ras related protein Rab 5A
Gene ID	5868
SwissProt ID	P20339

Application

Dilution Ratio	WB: 1/500-1/1000 IHC: 1/50-1/100 IF: 1/50-1/200 IP: 1/20
Molecular Weight	Calculated MW: 24 kDa; Observed MW: 24 kDa

Background

Product Name: Rab5 Rabbit Monoclonal Antibody
Catalog #: AMRe04105

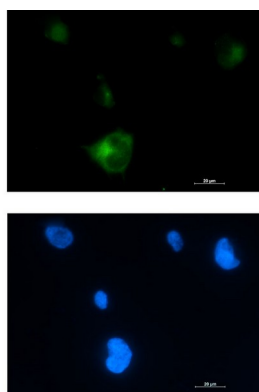


Rab5 is a member of the Ras superfamily of small Rab GTPases. Rab5 is localized at the plasma membrane and early endosomes and functions as a key regulator of vesicular trafficking during early endocytosis (1). The conformational change between Rab5 GTP/GDP states is essential for its biological function as a rate limiting regulator at multiple steps during endocytosis.

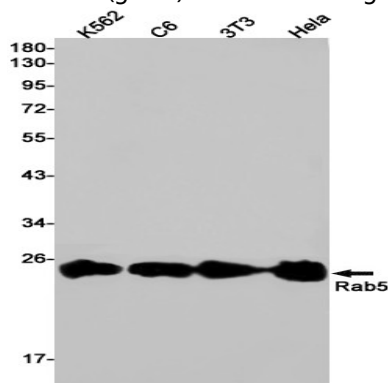
Research Area

Neuroscience

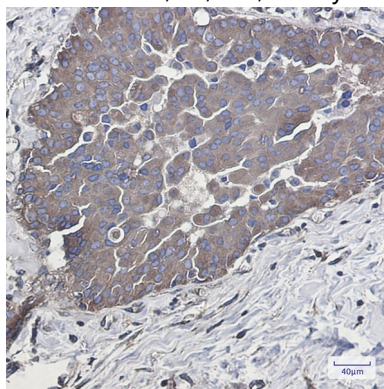
Image Data



Immunocytochemistry analysis of Rab5 (green) in HT-1080 using Rab5 antibody, and DAPI (blue).



Western blot analysis of Rab5 in K562, C6, 3T3, HeLa lysates using Rab5 antibody.



Product Name: Rab5 Rabbit Monoclonal Antibody
Catalog #: AMRe04105



Immunohistochemistry analysis of paraffin-embedded Human breast cancer tissue using Rab5 antibody. High-pressure and temperature Sodium Citrate pH 6.0 was used for antigen retrieval.

Note

For research use only.