

Summary

Production Name	Bcl-XL Rabbit Monoclonal Antibody
Description	Recombinant Rabbit Monoclonal antibody
Host	Rabbit
Application	WB,IHC-F,IHC-P,ICC/IF,IP
Reactivity	Human,Mouse,Rat

Performance

Conjugation	Unconjugated
Modification	Unmodified
Isotype	IgG
Clonality	Monoclonal Antibody
Form	Liquid
Storage	Store at 4°C short term. Aliquot and store at -20°C long term. Avoid freeze/thaw cycles.
Buffer	50mM Tris-Glycine(pH 7.4), 0.15M NaCl, 40% Glycerol, 0.01% Sodium azide and 0.05% BSA
Purification	Affinity Purified

Immunogen

Gene Name	BCL2L1
Alternative Names	BCL2L1; BCL2L; BCLX; Bcl-2-like protein 1; Bcl2-L-1; Apoptosis regulator Bcl-X
Gene ID	598
SwissProt ID	Q07817

Application

Dilution Ratio	WB: 1/500-1/1000 IHC: 1/50-1/100 IF: 1/50-1/200 IP: 1/20
Molecular Weight	Calculated MW: 26 kDa; Observed MW: 30 kDa

Background

Product Name: Bcl-XL Rabbit Monoclonal Antibody
Catalog #: AMRe04056

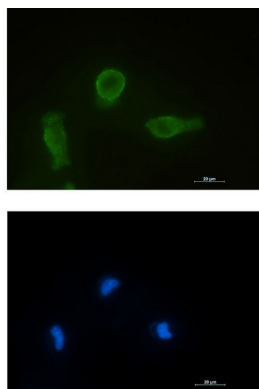


The protein encoded by this gene belongs to the BCL-2 protein family. BCL-2 family members form hetero- or homodimers and act as anti- or pro-apoptotic regulators that are involved in a wide variety of cellular activities.

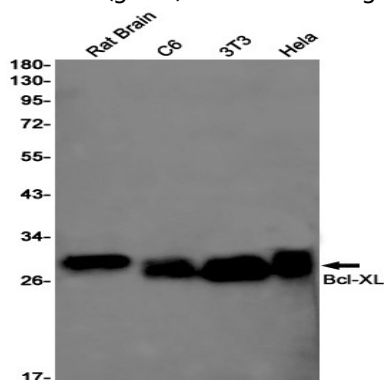
Research Area

Cell Biology

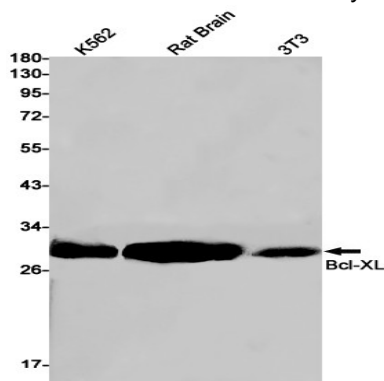
Image Data



Immunocytochemistry analysis of Bcl-XL (green) in HT-1080 using Bcl-XL antibody, and DAPI (blue).

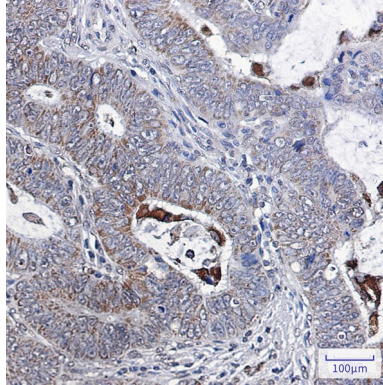


Western blot analysis of Bcl-XL in rat Brain, C6, 3T3, HeLa lysates using Bcl-XL antibody.



Western blot analysis of Bcl-XL in K562, rat Brain, 3T3 lysates using Bcl-XL antibody

Product Name: Bcl-XL Rabbit Monoclonal Antibody
Catalog #: AMRe04056



Immunohistochemistry analysis of paraffin-embedded Human colon cancer using Bcl-XL antibody. High-pressure and temperature Sodium Citrate pH 6.0 was used for antigen retrieval.

Note

For research use only.