

Summary

Production Name	MCM5 Rabbit Monoclonal Antibody
Description	Recombinant Rabbit Monoclonal antibody
Host	Rabbit
Application	WB,IHC-F,IHC-P,ICC/IF,IP
Reactivity	Human,Rat

Performance

Conjugation	Unconjugated
Modification	Unmodified
Isotype	IgG
Clonality	Monoclonal Antibody
Form	Liquid
Storage	Store at 4°C short term. Aliquot and store at -20°C long term. Avoid freeze/thaw cycles.
Buffer	50mM Tris-Glycine(pH 7.4), 0.15M NaCl, 40% Glycerol, 0.01% Sodium azide and 0.05% BSA
Purification	Affinity Purified

Immunogen

Gene Name	MCM5
Alternative Names	CDC46; MCM5; MGC5315; P1 CDC46
Gene ID	4174
SwissProt ID	P33992

Application

Dilution Ratio	WB: 1/500-1/1000 IHC: 1/50-1/100 IF: 1/50-1/200 IP: 1/20
Molecular Weight	Calculated MW: 82 kDa; Observed MW: 82 kDa

Background

Product Name: MCM5 Rabbit Monoclonal Antibody
Catalog #: AMRe04038

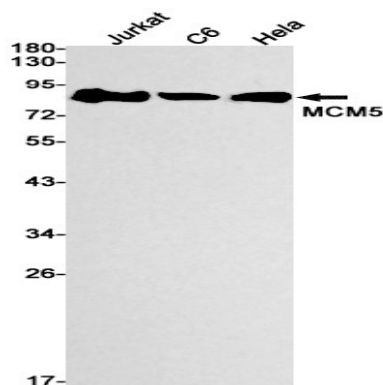


MCM5 Belongs to the MCM family.

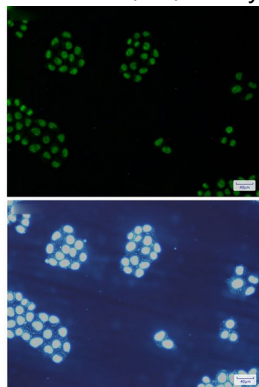
Research Area

Epigenetics and Nuclear Signaling

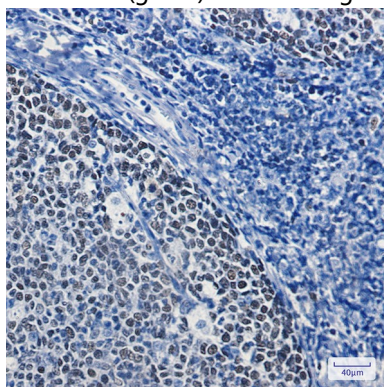
Image Data



Western blot analysis of MCM5 in Jurkat, C6, HeLa lysates using MCM5 antibody.



Immunocytochemistry analysis of MCM5(green) in HeLa using MCM5 antibody, and DAPI(blue)



Immunohistochemistry analysis of paraffin-embedded Human tonsil using MCM5 antibody. High-pressure and temperature Sodium Citrate pH 6.0 was used for antigen retrieval.

Product Name: MCM5 Rabbit Monoclonal Antibody
Catalog #: AMRe04038



Note

For research use only.