

**Product Name: Human kappa Light Chain Rabbit
Monoclonal Antibody
Catalog #: AMRe03277**

Summary

Production Name	Human kappa Light Chain Rabbit Monoclonal Antibody
Description	Recombinant Rabbit Monoclonal antibody
Host	Rabbit
Application	WB,IHC-F,IHC-P,ICC/IF
Reactivity	Human

Performance

Conjugation	Unconjugated
Modification	Unmodified
Isotype	IgG
Clonality	Monoclonal Antibody
Form	Liquid
Storage	Store at 4°C short term. Aliquot and store at -20°C long term. Avoid freeze/thaw cycles.
Buffer	50mM Tris-Glycine(pH 7.4), 0.15M NaCl, 40% Glycerol, 0.01% Sodium azide and 0.05% BSA
Purification	Affinity Purified

Immunogen

Gene Name	IGKC
Alternative Names	HCAK1; Ig kappa chain C region; IGKC; IMMUNOGLOBULIN InV; Km
Gene ID	3514.0
SwissProt ID	P01834

Application

Dilution Ratio	WB: 1/500-1/1000 IHC: 1/50-1/100 IF: 1/50-1/200
Molecular Weight	Calculated MW: 12 kDa; Observed MW: 26 kDa

**Product Name: Human kappa Light Chain Rabbit
Monoclonal Antibody
Catalog #: AMRe03277**

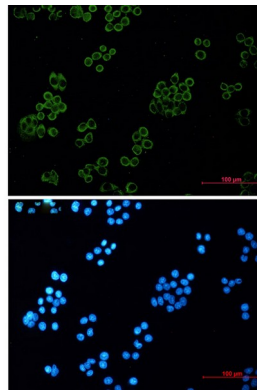
Background

Constant region of immunoglobulin light chains. Immunoglobulins, also known as antibodies, are membrane-bound or secreted glycoproteins produced by B lymphocytes. In the recognition phase of humoral immunity, the membrane-bound immunoglobulins serve as receptors which, upon binding of a specific antigen, trigger the clonal expansion and differentiation of B lymphocytes into immunoglobulins-secreting plasma cells.

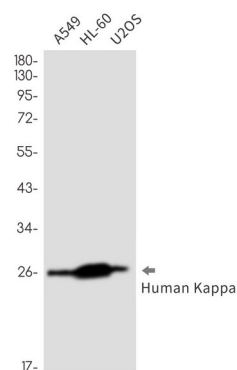
Research Area

Immunology

Image Data

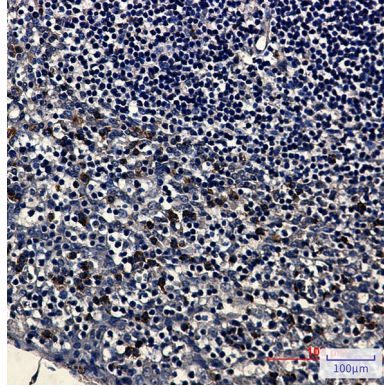


Immunocytochemistry analysis of Human kappa Light Chain (green) in HeLa using Human kappa Light Chain antibody, and DAPI (blue).



Western blot analysis of Human Kappa Light Chain in A549, HL-60, U2OS lysates using Human Kappa Light Chain antibody. Observed band size: 26kDa.

**Product Name: Human kappa Light Chain Rabbit
Monoclonal Antibody
Catalog #: AMRe03277**



Immunohistochemistry analysis of paraffin-embedded Human tonsil tissue using Human Kappa Light Chain antibody. High-pressure and temperature Sodium Citrate pH 6.0 was used for antigen retrieval.

Note

For research use only.