

**Product Name: General Transcription Factor II I Rabbit
Monoclonal Antibody
Catalog #: AMRe03227**



Summary

Production Name	General Transcription Factor II I Rabbit Monoclonal Antibody
Description	Recombinant Rabbit Monoclonal antibody
Host	Rabbit
Application	WB,IHC-F,IHC-P,ICC/IF
Reactivity	Human

Performance

Conjugation	Unconjugated
Modification	Unmodified
Isotype	IgG
Clonality	Monoclonal Antibody
Form	Liquid
Storage	Store at 4°C short term. Aliquot and store at -20°C long term. Avoid freeze/thaw cycles.
Buffer	50mM Tris-Glycine(pH 7.4), 0.15M NaCl, 40% Glycerol, 0.01% Sodium azide and 0.05% BSA
Purification	Affinity Purified

Immunogen

Gene Name	GTF2I
Alternative Names	GTF2I; BAP135; WBSCR6; General transcription factor II-I; GTFII-I; TFII-I; Bruton tyrosine kinase-associated protein 135; BAP-135; BTK-associated protein 135; SRF-Phox1-interacting protein; SPIN; Williams-Beuren syndrome chromosomal region
Gene ID	2969
SwissProt ID	P78347

Application

Dilution Ratio	WB: 1/500-1/1000 IHC: 1/50-1/100 IF: 1/50-1/200
Molecular Weight	Calculated MW: 112 kDa; Observed MW: 135,138 kDa

**Product Name: General Transcription Factor II I Rabbit
Monoclonal Antibody
Catalog #: AMRe03227**



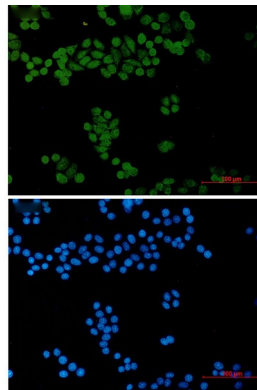
Background

Interacts with the basal transcription machinery by coordinating the formation of a multiprotein complex at the C-FOS promoter, and linking specific signal responsive activator complexes.

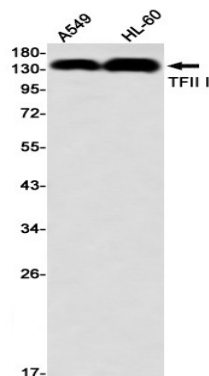
Research Area

Epigenetics and Nuclear Signaling

Image Data

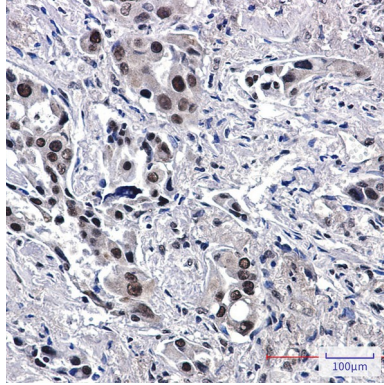


Immunocytochemistry analysis of General Transcription Factor II I (green) in HeLa using General Transcription Factor II I antibody, and DAPI (blue).



Western blot analysis of TFII I in A549, HL-60 lysates using TFII I antibody.

**Product Name: General Transcription Factor II I Rabbit
Monoclonal Antibody
Catalog #: AMRe03227**



Immunohistochemistry analysis of paraffin-embedded Human lung cancer tissue using TFII I antibody. High-pressure and temperature Sodium Citrate pH 6.0 was used for antigen retrieval.

Note

For research use only.