

Summary

Production Name	STAT5b Rabbit Monoclonal Antibody
Description	Recombinant Rabbit Monoclonal antibody
Host	Rabbit
Application	WB,IHC-F,IHC-P,ICC/IF,IP
Reactivity	Human,Mouse,Rat

Performance

Conjugation	Unconjugated
Modification	Unmodified
Isotype	IgG
Clonality	Monoclonal Antibody
Form	Liquid
Storage	Store at 4°C short term. Aliquot and store at -20°C long term. Avoid freeze/thaw cycles.
Buffer	50mM Tris-Glycine(pH 7.4), 0.15M NaCl, 40% Glycerol, 0.01% Sodium azide and 0.05% BSA
Purification	Affinity Purified

Immunogen

Gene Name	STAT5B
Alternative Names	STAT5
Gene ID	6777
SwissProt ID	P51692

Application

Dilution Ratio	WB: 1/500-1/1000 IHC: 1/50-1/100 IF: 1/50-1/200 IP: 1/20
Molecular Weight	Calculated MW: 90 kDa; Observed MW: 90 kDa

Background

Product Name: STAT5b Rabbit Monoclonal Antibody
Catalog #: AMRe03214

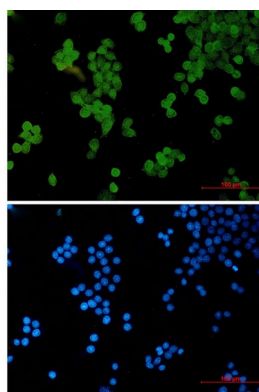


Stat5 is activated in response to a wide variety of ligands including IL-2, GM-CSF, growth hormone and prolactin. Stat5 is constitutively active in some leukemic cell types. Phosphorylated Stat5 is found in some endothelial cells treated with IL-3, which suggests its involvement in angiogenesis and cell motility. Stat5a and Stat5b are independently regulated and activated in various cell types.

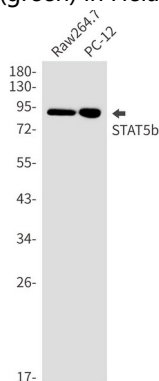
Research Area

Signal Transduction

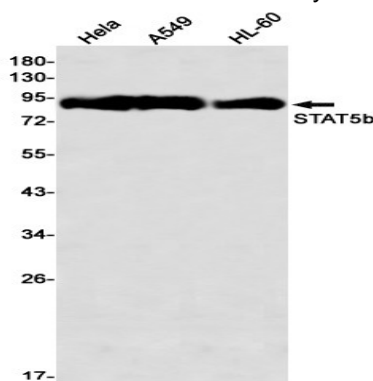
Image Data



Immunocytochemistry analysis of STAT5b (green) in HeLa using STAT5b antibody, and DAPI (blue).



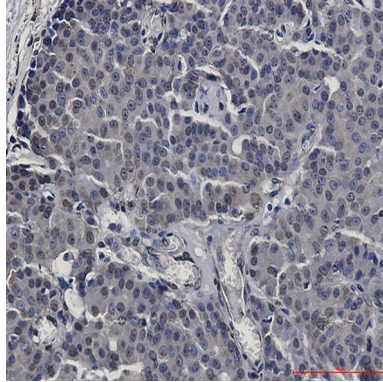
Western blot analysis of STAT5b in Raw264.7, PC-12 lysates using STAT5b antibody.



Product Name: STAT5b Rabbit Monoclonal Antibody
Catalog #: AMRe03214



Western blot analysis of STAT5b in HeLa, A549, HL-60 lysates using STAT5b antibody



Immunohistochemistry analysis of paraffin-embedded Human breast cancer using STAT5b antibody. High-pressure and temperature Sodium Citrate pH 6.0 was used for antigen retrieval.

Note

For research use only.