

Summary

Production Name	SF3B1 Rabbit Monoclonal Antibody
Description	Recombinant Rabbit Monoclonal antibody
Host	Rabbit
Application	WB,IHC-F,IHC-P,ICC/IF
Reactivity	Human,Mouse,Hamster,Rat

Performance

Conjugation	Unconjugated
Modification	Unmodified
Isotype	IgG
Clonality	Monoclonal Antibody
Form	Liquid
Storage	Store at 4°C short term. Aliquot and store at -20°C long term. Avoid freeze/thaw cycles.
Buffer	50mM Tris-Glycine(pH 7.4), 0.15M NaCl, 40% Glycerol, 0.01% Sodium azide and 0.05% BSA
Purification	Affinity Purified

Immunogen

Gene Name	SF3B1
Alternative Names	SF3B1; SAP155; Splicing factor 3B subunit 1; Pre-mRNA-splicing factor SF3b 155 kDa subunit; SF3b155; Spliceosome-associated protein 155; SAP 155
Gene ID	23451
SwissProt ID	O75533

Application

Dilution Ratio	WB: 1/500-1/1000 IHC: 1/50-1/100 IF: 1/50-1/200
Molecular Weight	Calculated MW: 146 kDa; Observed MW: 155 kDa

Product Name: SF3B1 Rabbit Monoclonal Antibody
Catalog #: AMRe03201



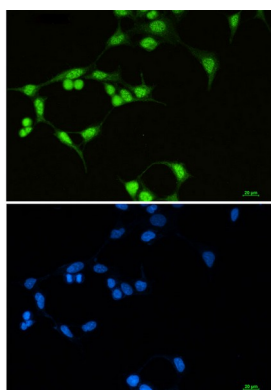
Background

SF3B1 is subunit 1 of the splicing factor 3b protein complex. Splicing factor 3b, together with splicing factor 3a and a 12S RNA unit, forms the U2 small nuclear ribonucleoproteins complex (U2 snRNP). The splicing factor 3b/3a complex binds pre-mRNA upstream of the intron's branch site in a sequence independent manner and may anchor the U2 snRNP to the pre-mRNA.

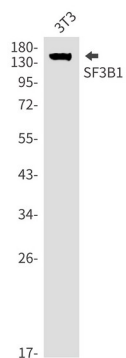
Research Area

Epigenetics and Nuclear Signaling

Image Data

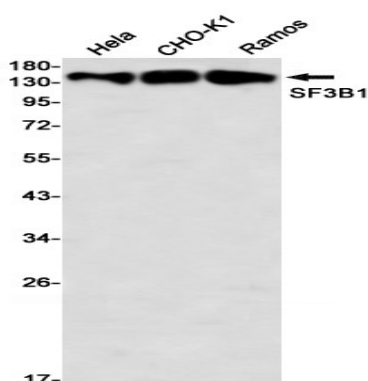


Immunocytochemistry analysis of SF3B1 (green) in 293T using SF3B1 antibody, and DAPI (blue).

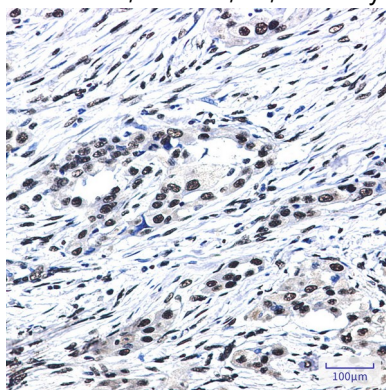


Western blot analysis of SF3B1 in 3T3 lysates using SF3B1 antibody.

Product Name: SF3B1 Rabbit Monoclonal Antibody
Catalog #: AMRe03201



Western blot analysis of SF3B1 in HeLa, CHO-K1, C6, Ramos lysates using SF3B1 antibody



Immunohistochemistry analysis of paraffin-embedded Human lung cancer using SF3B1 antibody. High-pressure and temperature Sodium Citrate pH 6.0 was used for antigen retrieval.

Note

For research use only.