
Summary

Production Name	SARA Rabbit Monoclonal Antibody
Description	Recombinant Rabbit Monoclonal antibody
Host	Rabbit
Application	WB,IHC-P,IP
Reactivity	Human

Performance

Conjugation	Unconjugated
Modification	Unmodified
Isotype	IgG
Clonality	Monoclonal Antibody
Form	Liquid
Storage	Store at 4°C short term. Aliquot and store at -20°C long term. Avoid freeze/thaw cycles.
Buffer	50mM Tris-Glycine(pH 7.4), 0.15M NaCl, 40% Glycerol, 0.01% Sodium azide and 0.05% BSA
Purification	Affinity Purified

Immunogen

Gene Name	ZFYVE9
Alternative Names	NSP; SARA; MADHIP; SMADIP; PPP1R173
Gene ID	9372
SwissProt ID	O95405

Application

Dilution Ratio	WB: 1/500-1/1000 IHC: 1/50-1/100 IP: 1/20
Molecular Weight	Calculated MW: 156 kDa; Observed MW: 156 kDa

Background

Product Name: SARA Rabbit Monoclonal Antibody
Catalog #: AMRe03195

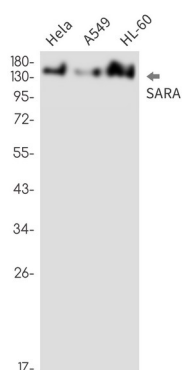


Early endosomal protein that functions to recruit SMAD2/SMAD3 to intracellular membranes and to the TGF-beta receptor.

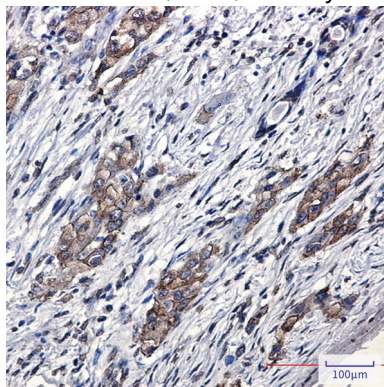
Research Area

Signal Transduction

Image Data



Western blot analysis of SARA in HeLa, A549, HL-60 lysates using SARA antibody.



Immunohistochemistry analysis of paraffin-embedded Human lung cancer using SARA antibody. High-pressure and temperature Sodium Citrate pH 6.0 was used for antigen retrieval.

Note

For research use only.