

Summary

Production Name	RSK2 Rabbit Monoclonal Antibody
Description	Recombinant Rabbit Monoclonal antibody
Host	Rabbit
Application	WB,IHC-P,IP
Reactivity	Human,Hamster

Performance

Conjugation	Unconjugated
Modification	Unmodified
Isotype	IgG
Clonality	Monoclonal Antibody
Form	Liquid
Storage	Store at 4°C short term. Aliquot and store at -20°C long term. Avoid freeze/thaw cycles.
Buffer	50mM Tris-Glycine(pH 7.4), 0.15M NaCl, 40% Glycerol, 0.01% Sodium azide and 0.05% BSA
Purification	Affinity Purified

Immunogen

Gene Name	RPS6KA3 RPS6KA3; ISPK1; MAPKAPK1B; RSK2; Ribosomal protein S6 kinase alpha-3; S6K-alpha-3; 90 kDa ribosomal protein S6 kinase 3; p90-RSK 3; p90RSK3; Insulin-stimulated protein kinase 1; ISPK-1; MAP kinase-activated protein kinase 1b; MAPK-activated
Alternative Names	
Gene ID	6197
SwissProt ID	P51812

Application

Dilution Ratio	WB: 1/500-1/1000 IHC: 1/50-1/100 IP: 1/20
Molecular Weight	Calculated MW: 84 kDa; Observed MW: 84 kDa

Product Name: RSK2 Rabbit Monoclonal Antibody
Catalog #: AMRe03192



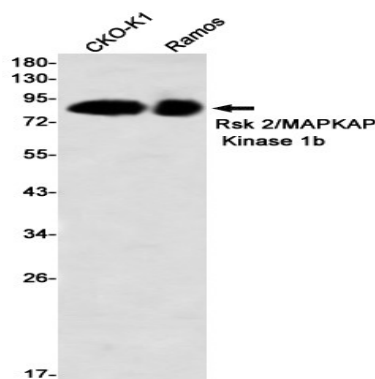
Background

This gene encodes a member of the RSK (ribosomal S6 kinase) family of serine/threonine kinases. This kinase contains 2 non-identical kinase catalytic domains and phosphorylates various substrates, including members of the mitogen-activated kinase (MAPK) signalling pathway. The activity of this protein has been implicated in controlling cell growth and differentiation. Mutations in this gene have been associated with Coffin-Lowry syndrome (CLS).

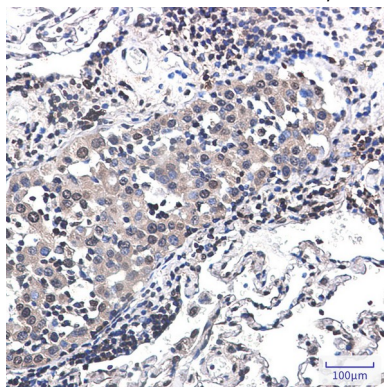
Research Area

Signal Transduction

Image Data



Western blot analysis of Rsk 2/MAPKAP Kinase 1b in CHO-K1, Ramos lysates using RSK2 antibody.



Immunohistochemistry analysis of paraffin-embedded Human lung cancer using Rsk 2/MAPKAP Kinase 1b antibody. High-pressure and temperature Sodium Citrate pH 6.0 was used for antigen retrieval.

Note

For research use only.