

## Summary

<b>Production Name</b>	Rad21 Rabbit Monoclonal Antibody
<b>Description</b>	Recombinant Rabbit Monoclonal antibody
<b>Host</b>	Rabbit
<b>Application</b>	WB,IHC-F,IHC-P,ICC/IF
<b>Reactivity</b>	Human,Hamster

## Performance

<b>Conjugation</b>	Unconjugated
<b>Modification</b>	Unmodified
<b>Isotype</b>	IgG
<b>Clonality</b>	Monoclonal Antibody
<b>Form</b>	Liquid
<b>Storage</b>	Store at 4°C short term. Aliquot and store at -20°C long term. Avoid freeze/thaw cycles.
<b>Buffer</b>	50mM Tris-Glycine(pH 7.4), 0.15M NaCl, 40% Glycerol, 0.01% Sodium azide and 0.05% BSA
<b>Purification</b>	Affinity Purified

## Immunogen

<b>Gene Name</b>	RAD21
<b>Alternative Names</b>	RAD21; HR21; KIAA0078; NXP1; Double-strand-break repair protein rad21 homolog; hHR21; Nuclear matrix protein 1; NXP-1; SCC1 homolog
<b>Gene ID</b>	5885
<b>SwissProt ID</b>	O60216

## Application

<b>Dilution Ratio</b>	WB: 1/500-1/1000 IHC: 1/50-1/100 IF: 1/50-1/200
<b>Molecular Weight</b>	Calculated MW: 72 kDa; Observed MW: 130 kDa

**Product Name: Rad21 Rabbit Monoclonal Antibody**  
**Catalog #: AMRe03175**



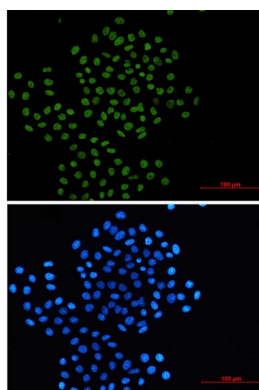
## Background

Rad21 is one of the major cohesin subunits that holds sister chromatids together until anaphase, when proteolytic cleavage by separase, a caspase-like enzyme, allows chromosomal separation. Rad21 interacts with Rec8 to form a cohesin complex that functions in sister chromatid alignment. Rad21 is also involved in the repair of double-strand breaks in DNA and is essential for mitotic growth. Rad21 undergoes a C-terminal cleavage induced by diverse stimuli right before apoptosis.

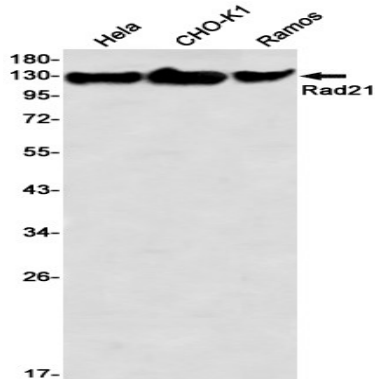
## Research Area

Cell Biology

## Image Data

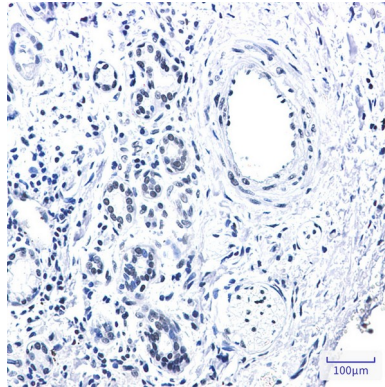


Immunocytochemistry analysis of Rad21 (green) in HeLa using Rad21 antibody, and DAPI (blue).



Western blot analysis of Rad21 in HeLa, CHO-K1, Ramos lysates using Rad21 antibody.

**Product Name: Rad21 Rabbit Monoclonal Antibody**  
**Catalog #: AMRe03175**



Immunohistochemistry analysis of paraffin-embedded Human lung cancer tissue using Rad21 antibody. High-pressure and temperature Sodium Citrate pH 6.0 was used for antigen retrieval.

**Note**

For research use only.