

Summary

Production Name	PELP1 Rabbit Monoclonal Antibody
Description	Recombinant Rabbit Monoclonal antibody
Host	Rabbit
Application	WB,IHC-F,IHC-P,ICC/IF
Reactivity	Human

Performance

Conjugation	Unconjugated
Modification	Unmodified
Isotype	IgG
Clonality	Monoclonal Antibody
Form	Liquid
Storage	Store at 4°C short term. Aliquot and store at -20°C long term. Avoid freeze/thaw cycles.
Buffer	50mM Tris-Glycine(pH 7.4), 0.15M NaCl, 40% Glycerol, 0.01% Sodium azide and 0.05% BSA
Purification	Affinity Purified

Immunogen

Gene Name	PELP1
Alternative Names	HMX3; MNAR; P160; PELP1; PELP1 proline glutamic acid leucine rich protein 1; PELP1 proline- glutamic
Gene ID	27043
SwissProt ID	Q8IZL8

Application

Dilution Ratio	WB: 1/500-1/1000 IHC: 1/50-1/100 IF: 1/50-1/200
Molecular Weight	Calculated MW: 120 kDa; Observed MW: 160 kDa

Product Name: PELP1 Rabbit Monoclonal Antibody
Catalog #: AMRe03139



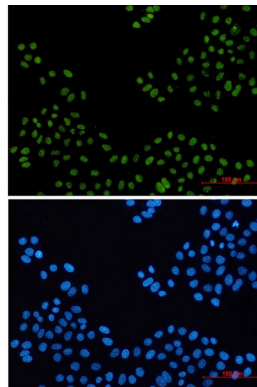
Background

This gene encodes a transcription factor which coactivates transcription of estrogen receptor responsive genes and corepresses genes activated by other hormone receptors or sequence-specific transcription factors. Expression of this gene is regulated by both members of the estrogen receptor family. This gene may be involved in the progression of several types of cancer. Alternative splicing results in multiple transcript variants.

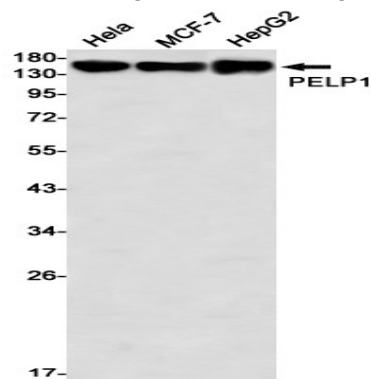
Research Area

Signal Transduction

Image Data

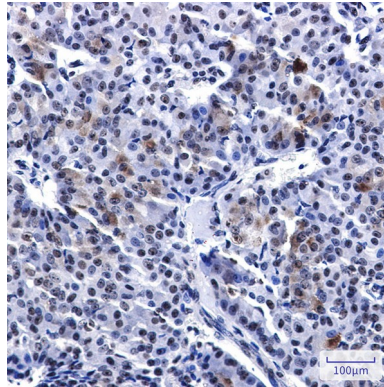


Immunocytochemistry analysis of PELP1 (green) in HeLa using PELP1 antibody, and DAPI (blue).



Western blot analysis of PELP1 in HeLa, MCF-7, HepG2 lysates using PELP1 antibody.

Product Name: PELP1 Rabbit Monoclonal Antibody
Catalog #: AMRe03139



Immunohistochemistry analysis of paraffin-embedded Human breast cancer tissue using PELP1 antibody. High-pressure and temperature Sodium Citrate pH 6.0 was used for antigen retrieval.

Note

For research use only.