

---

## Summary

<b>Production Name</b>	HIF1 beta Rabbit Monoclonal Antibody
<b>Description</b>	Recombinant Rabbit Monoclonal antibody
<b>Host</b>	Rabbit
<b>Application</b>	WB,IHC-P
<b>Reactivity</b>	Human,Mouse,Rat,Hamster

## Performance

<b>Conjugation</b>	Unconjugated
<b>Modification</b>	Unmodified
<b>Isotype</b>	IgG
<b>Clonality</b>	Monoclonal Antibody
<b>Form</b>	Liquid
<b>Storage</b>	Store at 4°C short term. Aliquot and store at -20°C long term. Avoid freeze/thaw cycles.
<b>Buffer</b>	50mM Tris-Glycine(pH 7.4), 0.15M NaCl, 40% Glycerol, 0.01% Sodium azide and 0.05% BSA
<b>Purification</b>	Affinity Purified

## Immunogen

<b>Gene Name</b>	ARNT ARNT; BHLHE2; Aryl hydrocarbon receptor nuclear translocator; ARNT protein; Class E
<b>Alternative Names</b>	basic helix-loop-helix protein 2; bHLHe2; Dioxin receptor; nuclear translocator; Hypoxia-inducible factor 1-beta; HIF-1-beta; HIF1-beta
<b>Gene ID</b>	405
<b>SwissProt ID</b>	P27540

## Application

<b>Dilution Ratio</b>	WB: 1/500-1/1000 IHC: 1/50-1/100
<b>Molecular Weight</b>	Calculated MW: 87 kDa; Observed MW: 87 kDa

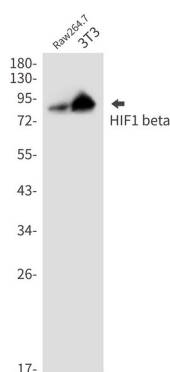
## Background

HIF-1 $\beta$  is also known as AhR nuclear translocator (ARNT) due to its ability to partner with the aryl hydrocarbon receptor (AhR) to form a heterodimeric transcription factor complex. Together with AhR, HIF-1 $\beta$  plays an important role in xenobiotics metabolism. In addition, a chromosomal translocation leading to a TEL-ARNT fusion protein is associated with acute myeloblastic leukemia. Studies also found that ARNT/HIF-1 $\beta$  expression levels decrease significantly in pancreatic islets from patients with type 2 diabetes, suggesting that HIF-1 $\beta$  plays an important role in pancreatic  $\beta$ -cell function.

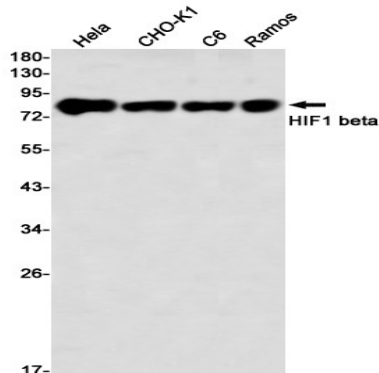
## Research Area

Cardiovascular

## Image Data

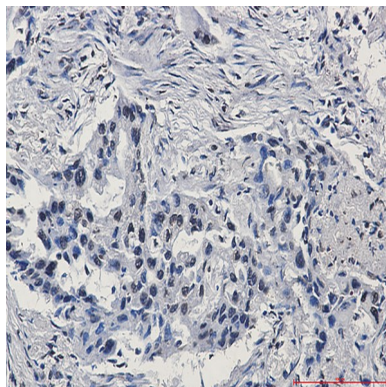


Western blot analysis of HIF1 beta in Raw264.7, 3T3 lysates using HIF1 beta antibody.



Western blot analysis of HIF1 beta in HeLa, CHO-K1, C6, Ramos lysates using HIF1 beta antibody.

**Product Name: HIF1 beta Rabbit Monoclonal Antibody**  
**Catalog #: AMRe03025**



Immunohistochemistry analysis of paraffin-embedded Human lung cancer using HIF1 beta antibody. High-pressure and temperature Sodium Citrate pH 6.0 was used for antigen retrieval.

**Note**

For research use only.