

Summary

Production Name	CSDE1 Rabbit Monoclonal Antibody
Description	Recombinant Rabbit Monoclonal antibody
Host	Rabbit
Application	WB,IHC-F,IHC-P,ICC/IF,IP
Reactivity	Human

Performance

Conjugation	Unconjugated
Modification	Unmodified
Isotype	IgG
Clonality	Monoclonal Antibody
Form	Liquid
Storage	Store at 4°C short term. Aliquot and store at -20°C long term. Avoid freeze/thaw cycles.
Buffer	50mM Tris-Glycine(pH 7.4), 0.15M NaCl, 40% Glycerol, 0.01% Sodium azide and 0.05% BSA
Purification	Affinity Purified

Immunogen

Gene Name	CSDE1
Alternative Names	UNR; D1S155E
Gene ID	7812
SwissProt ID	O75534

Application

Dilution Ratio	WB: 1/500-1/1000 IHC: 1/50-1/100 IF: 1/50-1/200 IP: 1/20
Molecular Weight	Calculated MW: 89 kDa; Observed MW: 89 kDa

Background

Product Name: CSDE1 Rabbit Monoclonal Antibody
Catalog #: AMRe02953

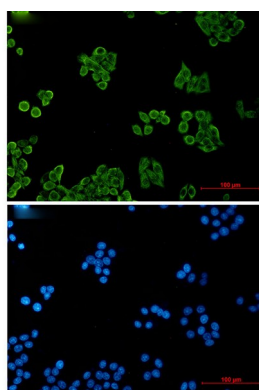


RNA-binding protein involved in translationally coupled mRNA turnover.

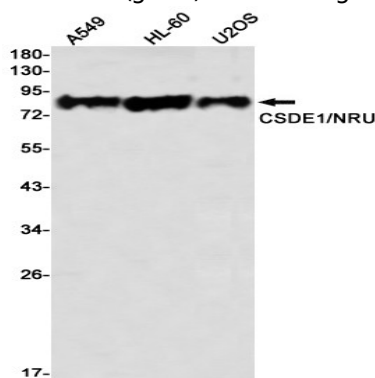
Research Area

Epigenetics and Nuclear Signaling

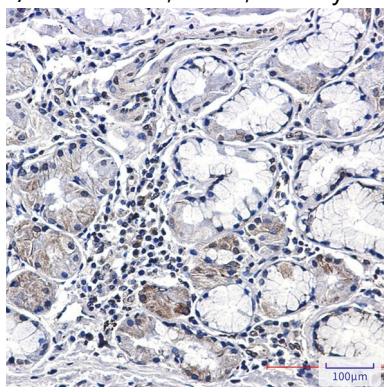
Image Data



Immunocytochemistry analysis of CSDE1 (green) in HeLa using CSDE1 antibody, and DAPI (blue).



Western blot analysis of CSDE1/NRU in A549, HL-60, U2OS lysates using CSDE1/NRU antibody.



Immunohistochemistry analysis of paraffin-embedded Human lung cancer tissue using CSDE1/NRU antibody. High-pressure and temperature Sodium Citrate pH 6.0 was used for antigen retrieval.

Product Name: CSDE1 Rabbit Monoclonal Antibody
Catalog #: AMRe02953



Note

For research use only.