

Summary

Production Name	CLIP170 Rabbit Monoclonal Antibody
Description	Recombinant Rabbit Monoclonal antibody
Host	Rabbit
Application	WB,IHC-F,IHC-P,ICC/IF,IP
Reactivity	Human

Performance

Conjugation	Unconjugated
Modification	Unmodified
Isotype	IgG
Clonality	Monoclonal Antibody
Form	Liquid
Storage	Store at 4°C short term. Aliquot and store at -20°C long term. Avoid freeze/thaw cycles.
Buffer	50mM Tris-Glycine(pH 7.4), 0.15M NaCl, 40% Glycerol, 0.01% Sodium azide and 0.05% BSA
Purification	Affinity Purified

Immunogen

Gene Name	CLIP1
Alternative Names	RSN; CLIP; CYLN1; CLIP170; CLIP-170
Gene ID	6249
SwissProt ID	P30622

Application

Dilution Ratio	WB: 1/500-1/1000 IHC: 1/50-1/100 IF: 1/50-1/200 IP: 1/20
Molecular Weight	Calculated MW: 162 kDa; Observed MW: 170 kDa

Background

Product Name: CLIP170 Rabbit Monoclonal Antibody
Catalog #: AMRe02947

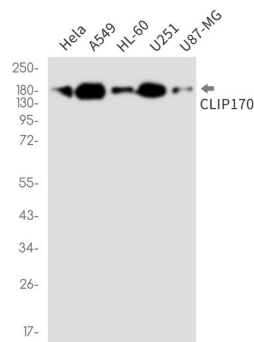


Binds to the plus end of microtubules and regulates the dynamics of the microtubule cytoskeleton.

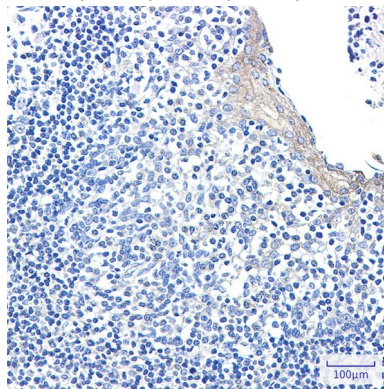
Research Area

Cell Biology

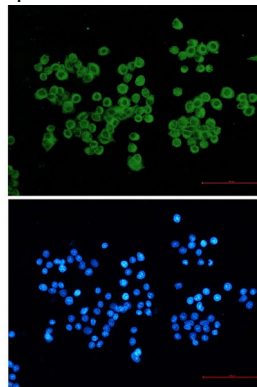
Image Data



Western blot analysis of CLIP170 in HeLa, A549, HL-60, U251, U87-MG lysates using CLIP170 antibody.



Immunohistochemistry analysis of paraffin-embedded Human tonsil using CLIP170 antibody. High-pressure and temperature Sodium Citrate pH 6.0 was used for antigen retrieval.



Immunocytochemistry analysis of CLIP17 (green) in HeLa using CLIP170 antibody, and DAPI (blue)

Product Name: CLIP170 Rabbit Monoclonal Antibody
Catalog #: AMRe02947



Note

For research use only.