

## Summary

<b>Production Name</b>	CCT2 Rabbit Monoclonal Antibody
<b>Description</b>	Recombinant Rabbit Monoclonal antibody
<b>Host</b>	Rabbit
<b>Application</b>	WB,IHC-F,IHC-P,ICC/IF,IP
<b>Reactivity</b>	Human,Mouse,Rat

## Performance

<b>Conjugation</b>	Unconjugated
<b>Modification</b>	Unmodified
<b>Isotype</b>	IgG
<b>Clonality</b>	Monoclonal Antibody
<b>Form</b>	Liquid
<b>Storage</b>	Store at 4°C short term. Aliquot and store at -20°C long term. Avoid freeze/thaw cycles.
<b>Buffer</b>	50mM Tris-Glycine(pH 7.4), 0.15M NaCl, 40% Glycerol, 0.01% Sodium azide and 0.05% BSA
<b>Purification</b>	Affinity Purified

## Immunogen

<b>Gene Name</b>	CCT2
<b>Alternative Names</b>	CCT2; 99D8.1; CCTB; T-complex protein 1 subunit beta; TCP-1-beta; CCT-beta
<b>Gene ID</b>	10576
<b>SwissProt ID</b>	P78371

## Application

<b>Dilution Ratio</b>	WB: 1/500-1/1000 IHC: 1/50-1/100 IF: 1/50-1/200 IP: 1/20
<b>Molecular Weight</b>	Calculated MW: 57 kDa; Observed MW: 57 kDa

## Background

**Product Name: CCT2 Rabbit Monoclonal Antibody**  
**Catalog #: AMRe02930**

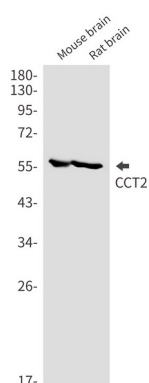


Molecular chaperone; assists the folding of proteins upon ATP hydrolysis. As part of the BBS/CCT complex may play a role in the assembly of BBSome, a complex involved in ciliogenesis regulating transports vesicles to the cilia. Known to play a role, in vitro, in the folding of actin and tubulin.

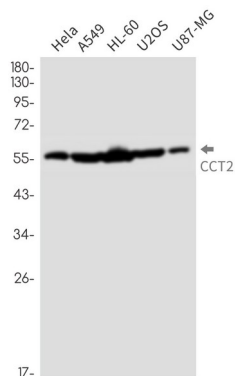
## Research Area

Signal Transduction

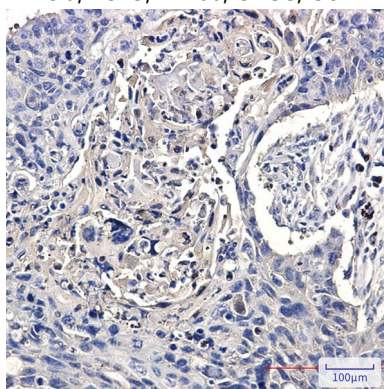
## Image Data



Western blot analysis of CCT2 in mouse brain, rat brain lysates using CCT2 antibody.



Western blot analysis of CCT2 in HeLa, A549, HL-60, U2OS, U87-MG lysates using CCT2 antibody.



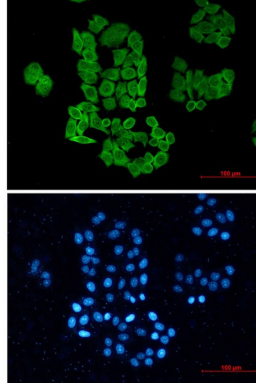
Immunohistochemistry analysis of paraffin-embedded Human lung cancer using CCT2 antibody. High-pressure and

**Product Name: CCT2 Rabbit Monoclonal Antibody**  
**Catalog #: AMRe02930**

---



temperature Sodium Citrate pH 6.0 was used for antigen retrieval.



Immunocytochemistry analysis of CCT2 (green) in hela using CCT2 antibody, and DAPI (blue).

**Note**

For research use only.