

Product Name: alpha Internexin Rabbit Monoclonal Antibody
Catalog #: AMRe02895



Summary

Production Name	alpha Internexin Rabbit Monoclonal Antibody
Description	Recombinant Rabbit Monoclonal antibody
Host	Rabbit
Application	WB,IHC-F,IHC-P,ICC/IF,IP
Reactivity	Human,Mouse,Rat

Performance

Conjugation	Unconjugated
Modification	Unmodified
Isotype	IgG
Clonality	Monoclonal Antibody
Form	Liquid
Storage	Store at 4°C short term. Aliquot and store at -20°C long term. Avoid freeze/thaw cycles.
Buffer	50mM Tris-Glycine(pH 7.4), 0.15M NaCl, 40% Glycerol, 0.01% Sodium azide and 0.05% BSA
Purification	Affinity Purified

Immunogen

Gene Name	INA
Alternative Names	INA; NEF5; Alpha-internexin; Alpha-Inx; 66 kDa neurofilament protein; NF-66; Neurofilament-66; Neurofilament 5
Gene ID	9118
SwissProt ID	Q16352

Application

Dilution Ratio	WB: 1/500-1/1000 IHC: 1/50-1/100 IF: 1/50-1/200 IP: 1/20
Molecular Weight	Calculated MW: 55 kDa; Observed MW: 55 kDa

Product Name: alpha Internexin Rabbit Monoclonal Antibody
Catalog #: AMRe02895



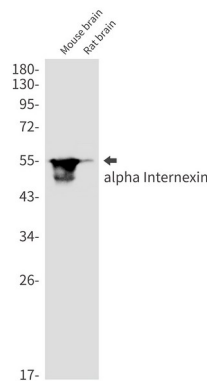
Background

Class-IV neuronal intermediate filament that is able to self-assemble. It is involved in the morphogenesis of neurons. It may form an independent structural network without the involvement of other neurofilaments or it may cooperate with NF-L to form the filamentous backbone to which NF-M and NF-H attach to form the cross-bridges.

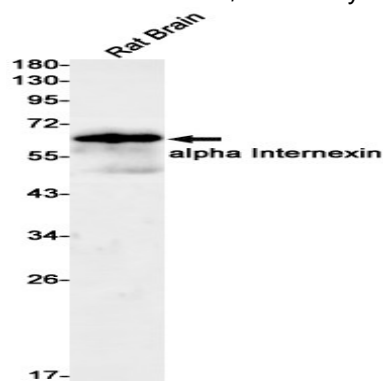
Research Area

Cell Biology

Image Data

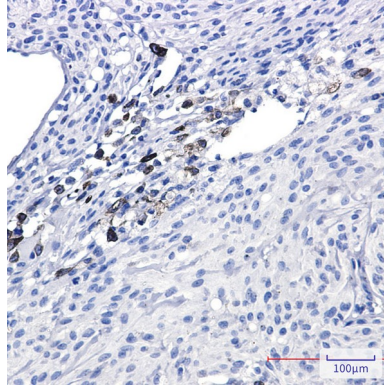


Western blot analysis of alpha Internexin in mouse brain, rat brain lysates using alpha Internexin antibody.

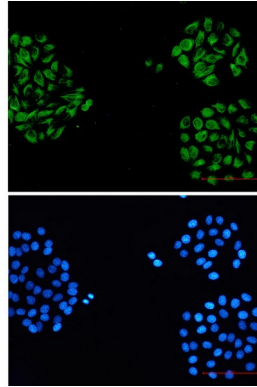


Western blot analysis of alpha Internexin in rat Brain lysates using alpha Internexin antibody.

Product Name: alpha Internexin Rabbit Monoclonal Antibody
Catalog #: AMRe02895



Immunohistochemistry analysis of paraffin-embedded Human Brain using alpha Internexin antibody. High-pressure and temperature Sodium Citrate pH 6.0 was used for antigen retrieval.



Immunocytochemistry analysis of alpha Internexin (green) in HeLa using alpha Internexin antibody, and DAPI (blue).

Note

For research use only.