

Summary

Production Name	SMYD3 Rabbit Monoclonal Antibody
Description	Recombinant Rabbit Monoclonal antibody
Host	Rabbit
Application	WB,IHC-F,IHC-P,ICC/IF,IP
Reactivity	Human

Performance

Conjugation	Unconjugated
Modification	Unmodified
Isotype	IgG
Clonality	Monoclonal Antibody
Form	Liquid
Storage	Store at 4°C short term. Aliquot and store at -20°C long term. Avoid freeze/thaw cycles.
Buffer	50mM Tris-Glycine(pH 7.4), 0.15M NaCl, 40% Glycerol, 0.01% Sodium azide and 0.05% BSA
Purification	Affinity Purified

Immunogen

Gene Name	SMYD3
Alternative Names	KMT3E; ZMYND1; ZNFN3A1; bA74P14.1
Gene ID	64754
SwissProt ID	Q9H7B4

Application

Dilution Ratio	WB: 1/500-1/1000 IHC: 1/50-1/100 IF: 1/50-1/200 IP: 1/20
Molecular Weight	Calculated MW: 49 kDa; Observed MW: 49 kDa

Background

Product Name: SMYD3 Rabbit Monoclonal Antibody
Catalog #: AMRe02617

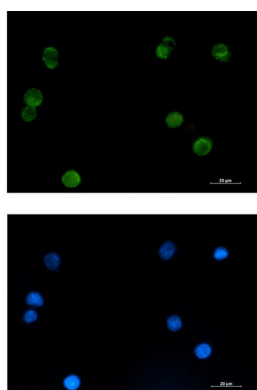


Histone methyltransferase. Specifically methylates 'Lys-4' of histone H3, inducing di- and tri-methylation, but not monomethylation. Plays an important role in transcriptional activation as a member of an RNA polymerase complex. Binds DNA containing 5'-CCCTCC-3' or 5'-GAGGGG-3' sequences.

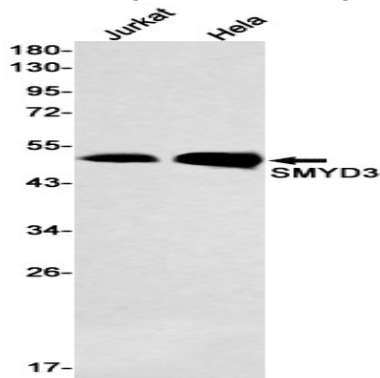
Research Area

Epigenetics and Nuclear Signaling

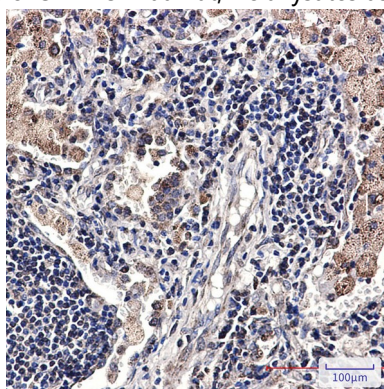
Image Data



Immunocytochemistry analysis of SMYD3 (green) in K562 using SMYD3 antibody, and DAPI (blue).



Western blot analysis of SMYD3 in Jurkat, HeLa lysates using SMYD3 antibody.



Immunohistochemistry analysis of paraffin-embedded Human lung cancer tissue using SMYD3 antibody. High-pressure and

Product Name: SMYD3 Rabbit Monoclonal Antibody
Catalog #: AMRe02617



temperature Sodium Citrate pH 6.0 was used for antigen retrieval.

Note

For research use only.