

## Summary

<b>Production Name</b>	SEC61A Rabbit Monoclonal Antibody
<b>Description</b>	Recombinant Rabbit Monoclonal antibody
<b>Host</b>	Rabbit
<b>Application</b>	WB,IHC-F,IHC-P,ICC/IF,IP
<b>Reactivity</b>	Human,Mouse,Rat

## Performance

<b>Conjugation</b>	Unconjugated
<b>Modification</b>	Unmodified
<b>Isotype</b>	IgG
<b>Clonality</b>	Monoclonal Antibody
<b>Form</b>	Liquid
<b>Storage</b>	Store at 4°C short term. Aliquot and store at -20°C long term. Avoid freeze/thaw cycles.
<b>Buffer</b>	50mM Tris-Glycine(pH 7.4), 0.15M NaCl, 40% Glycerol, 0.01% Sodium azide and 0.05% BSA
<b>Purification</b>	Affinity Purified

## Immunogen

<b>Gene Name</b>	SEC61A2
<b>Alternative Names</b>	SEC61A2, Sec61 alpha-2, Protein transport protein Sec61 subunit alpha isoform 2
<b>Gene ID</b>	55176
<b>SwissProt ID</b>	Q9H9S3

## Application

<b>Dilution Ratio</b>	WB: 1/500-1/1000 IHC: 1/50-1/100 IF: 1/50-1/200 IP: 1/20
<b>Molecular Weight</b>	Calculated MW: 52 kDa; Observed MW: 40 kDa

## Background

**Product Name: SEC61A Rabbit Monoclonal Antibody**  
**Catalog #: AMRe02581**

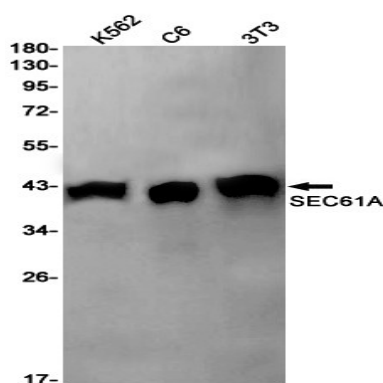


Plays a crucial role in the insertion of secretory and membrane polypeptides into the ER. Required for assembly of membrane and secretory proteins. Tightly associated with membrane-bound ribosomes, either directly or through adapter proteins.

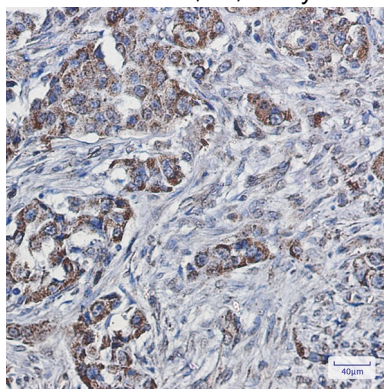
## Research Area

Signal Transduction

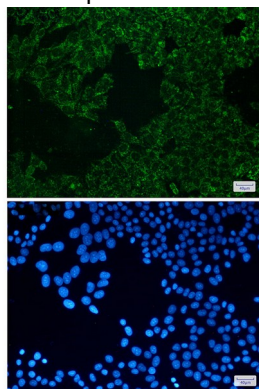
## Image Data



Western blot analysis of SEC61A in K562, C6, 3T3 lysates using SEC61A antibody.



Immunohistochemistry analysis of paraffin-embedded Human lung cancer using SEC61A antibody. High-pressure and temperature Sodium Citrate pH 6.0 was used for antigen retrieval.



**Product Name: SEC61A Rabbit Monoclonal Antibody**  
**Catalog #: AMRe02581**



---

Immunocytochemistry analysis of SEC61A(green) in Hela using SEC61A antibody,and DAPI(blue)

**Note**

For research use only.