

## Summary

<b>Production Name</b>	RAVER2 Rabbit Monoclonal Antibody
<b>Description</b>	Recombinant Rabbit Monoclonal antibody
<b>Host</b>	Rabbit
<b>Application</b>	WB,IHC-F,IHC-P,ICC/IF,IP
<b>Reactivity</b>	Human

## Performance

<b>Conjugation</b>	Unconjugated
<b>Modification</b>	Unmodified
<b>Isotype</b>	IgG
<b>Clonality</b>	Monoclonal Antibody
<b>Form</b>	Liquid
<b>Storage</b>	Store at 4°C short term. Aliquot and store at -20°C long term. Avoid freeze/thaw cycles.
<b>Buffer</b>	50mM Tris-Glycine(pH 7.4), 0.15M NaCl, 40% Glycerol, 0.01% Sodium azide and 0.05% BSA
<b>Purification</b>	Affinity Purified

## Immunogen

<b>Gene Name</b>	RAVER2
<b>Alternative Names</b>	Protein raver-2
<b>Gene ID</b>	55225
<b>SwissProt ID</b>	Q9HCJ3

## Application

<b>Dilution Ratio</b>	WB: 1/500-1/1000 IHC: 1/50-1/100 IF: 1/50-1/200 IP: 1/20
<b>Molecular Weight</b>	Calculated MW: 74 kDa; Observed MW: 74 kDa

## Background

**Product Name: RAVER2 Rabbit Monoclonal Antibody**  
**Catalog #: AMRe02527**

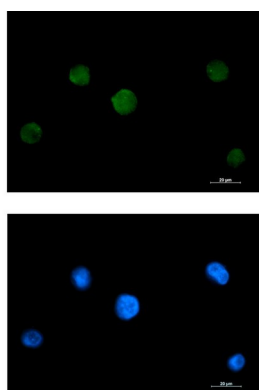


May bind single-stranded nucleic acids.

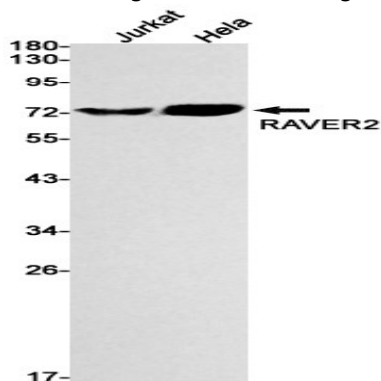
## Research Area

Epigenetics and Nuclear Signaling

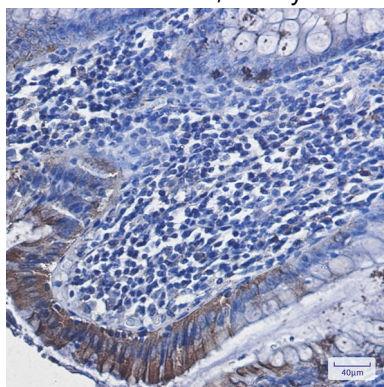
## Image Data



Immunocytochemistry analysis of RAVER2 (green) in K562 using RAVER2 antibody, and DAPI (blue).



Western blot analysis of RAVER2 in Jurkat, Hela lysates using RAVER2 antibody.



Immunohistochemistry analysis of paraffin-embedded Human colon cancer tissue using RAVER2 antibody. High-pressure and temperature Sodium Citrate pH 6.0 was used for antigen retrieval.

**Product Name: RAVER2 Rabbit Monoclonal Antibody**  
**Catalog #: AMRe02527**

---



**Note**

For research use only.