

**Product Name: RAP1 Rabbit Monoclonal Antibody**  
**Catalog #: AMRe02521**



## Summary

<b>Production Name</b>	RAP1 Rabbit Monoclonal Antibody
<b>Description</b>	Recombinant Rabbit Monoclonal antibody
<b>Host</b>	Rabbit
<b>Application</b>	WB,IP
<b>Reactivity</b>	Human,Mouse,Rat

## Performance

<b>Conjugation</b>	Unconjugated
<b>Modification</b>	Unmodified
<b>Isotype</b>	IgG
<b>Clonality</b>	Monoclonal Antibody
<b>Form</b>	Liquid
<b>Storage</b>	Store at 4°C short term. Aliquot and store at -20°C long term. Avoid freeze/thaw cycles.
<b>Buffer</b>	50mM Tris-Glycine(pH 7.4), 0.15M NaCl, 40% Glycerol, 0.01% Sodium azide and 0.05% BSA
<b>Purification</b>	Affinity Purified

## Immunogen

<b>Gene Name</b>	RAP1B
<b>Alternative Names</b>	Ras-related protein Rap-1b; K-REV; RAL1B
<b>Gene ID</b>	5908
<b>SwissProt ID</b>	P61224

## Application

<b>Dilution Ratio</b>	WB: 1/500-1/1000 IP: 1/20
<b>Molecular Weight</b>	Calculated MW: 21 kDa; Observed MW: 21 kDa

## Background

**Product Name: RAP1 Rabbit Monoclonal Antibody**  
**Catalog #: AMRe02521**

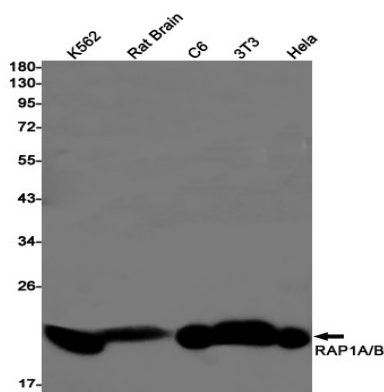


GTP-binding protein that possesses intrinsic GTPase activity. Contributes to the polarizing activity of KRIT1 and CDH5 in the establishment and maintenance of correct endothelial cell polarity and vascular lumen. Required for the localization of phosphorylated PRKCZ, PARD3 and TIAM1 to the cell junction. Plays a role in the establishment of basal endothelial barrier function.

## Research Area

Signal Transduction

## Image Data



Western blot analysis of RAP1A/B in K562, rat Brain, C6, 3T3, HeLa lysates using RAP1 antibody.

## Note

For research use only.