

## Summary

<b>Production Name</b>	Radixin Rabbit Monoclonal Antibody
<b>Description</b>	Recombinant Rabbit Monoclonal antibody
<b>Host</b>	Rabbit
<b>Application</b>	WB,IHC-P,IP
<b>Reactivity</b>	Human,Mouse,Rat

## Performance

<b>Conjugation</b>	Unconjugated
<b>Modification</b>	Unmodified
<b>Isotype</b>	IgG
<b>Clonality</b>	Monoclonal Antibody
<b>Form</b>	Liquid
<b>Storage</b>	Store at 4°C short term. Aliquot and store at -20°C long term. Avoid freeze/thaw cycles.
<b>Buffer</b>	50mM Tris-Glycine(pH 7.4), 0.15M NaCl, 40% Glycerol, 0.01% Sodium azide and 0.05% BSA
<b>Purification</b>	Affinity Purified

## Immunogen

<b>Gene Name</b>	RDX
<b>Alternative Names</b>	RDX; Radixin
<b>Gene ID</b>	5962
<b>SwissProt ID</b>	P35241

## Application

<b>Dilution Ratio</b>	WB: 1/500-1/1000 IHC: 1/50-1/100 IP: 1/20
<b>Molecular Weight</b>	Calculated MW: 69 kDa; Observed MW: 80 kDa

## Background

**Product Name: Radixin Rabbit Monoclonal Antibody**  
**Catalog #: AMRe02514**

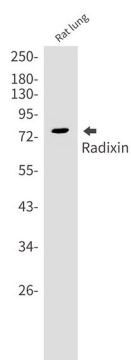


Probably plays a crucial role in the binding of the barbed end of actin filaments to the plasma membrane.

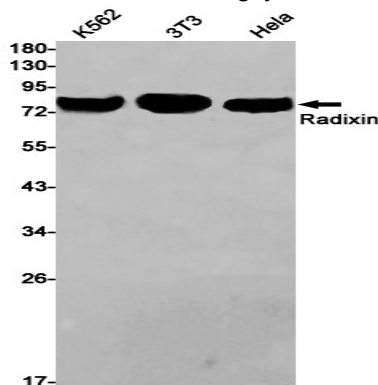
## Research Area

Signal Transduction

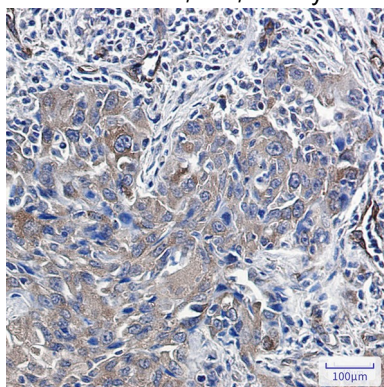
## Image Data



Western blot analysis of Radixin in rat lung lysates using Radixin antibody.



Western blot analysis of Radixin in K562, 3T3, HeLa lysates using Radixin antibody.



Immunohistochemistry analysis of paraffin-embedded Human lung cancer using Radixin antibody. High-pressure and temperature Sodium Citrate pH 6.0 was used for antigen retrieval.

**Product Name: Radixin Rabbit Monoclonal Antibody**  
**Catalog #: AMRe02514**

---



**Note**

For research use only.