

**Product Name: Pyrophosphatase 1 Rabbit Monoclonal Antibody**  
**Catalog #: AMRe02502**



---

## Summary

<b>Production Name</b>	Pyrophosphatase 1 Rabbit Monoclonal Antibody
<b>Description</b>	Recombinant Rabbit Monoclonal antibody
<b>Host</b>	Rabbit
<b>Application</b>	WB,IP
<b>Reactivity</b>	Human,Mouse

## Performance

<b>Conjugation</b>	Unconjugated
<b>Modification</b>	Unmodified
<b>Isotype</b>	IgG
<b>Clonality</b>	Monoclonal Antibody
<b>Form</b>	Liquid
<b>Storage</b>	Store at 4°C short term. Aliquot and store at -20°C long term. Avoid freeze/thaw cycles.
<b>Buffer</b>	50mM Tris-Glycine(pH 7.4), 0.15M NaCl, 40% Glycerol, 0.01% Sodium azide and 0.05% BSA
<b>Purification</b>	Affinity Purified

## Immunogen

<b>Gene Name</b>	PPA1
<b>Alternative Names</b>	PP; PP1; IOPPP; HEL-S-66p; SID6-8061
<b>Gene ID</b>	5464
<b>SwissProt ID</b>	Q15181

## Application

<b>Dilution Ratio</b>	WB: 1/500-1/1000 IP: 1/20
<b>Molecular Weight</b>	Calculated MW: 33 kDa; Observed MW: 33 kDa

**Product Name: Pyrophosphatase 1 Rabbit Monoclonal Antibody**  
**Catalog #: AMRe02502**



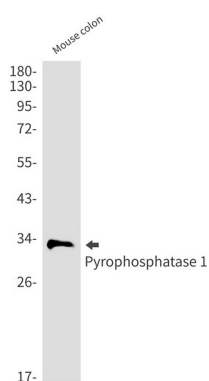
## Background

The protein encoded by this gene is a member of the inorganic pyrophosphatase (PPase) family. PPases catalyze the hydrolysis of pyrophosphate to inorganic phosphate, which is important for the phosphate metabolism of cells. Studies of a similar protein in bovine suggested a cytoplasmic localization of this enzyme.

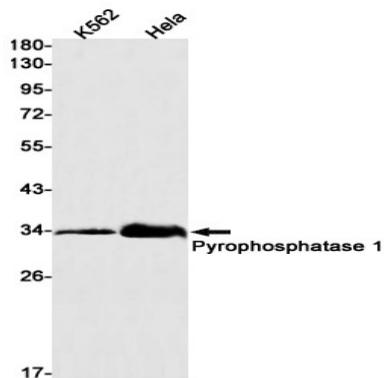
## Research Area

Signal Transduction

## Image Data



Western blot analysis of Pyrophosphatase 1 in mouse colon lysates using Pyrophosphatase 1 antibody.



Western blot analysis of Pyrophosphatase 1 in K562, HeLa lysates using Pyrophosphatase 1 antibody.

## Note

For research use only.