

Summary

Production Name	PKC eta Rabbit Monoclonal Antibody
Description	Recombinant Rabbit Monoclonal antibody
Host	Rabbit
Application	WB,IP
Reactivity	Human,Mouse,Rat

Performance

Conjugation	Unconjugated
Modification	Unmodified
Isotype	IgG
Clonality	Monoclonal Antibody
Form	Liquid
Storage	Store at 4°C short term. Aliquot and store at -20°C long term. Avoid freeze/thaw cycles.
Buffer	50mM Tris-Glycine(pH 7.4), 0.15M NaCl, 40% Glycerol, 0.01% Sodium azide and 0.05% BSA
Purification	Affinity Purified

Immunogen

Gene Name	PRKCH
Alternative Names	nPKC eta; PKC h; PKC L; PKCh; PKCL; Prkch; PRKCL; Protein kinase C eta
Gene ID	5583
SwissProt ID	P24723

Application

Dilution Ratio	WB: 1/500-1/1000 IP: 1/20
Molecular Weight	Calculated MW: 78 kDa; Observed MW: 78 kDa

Background

Product Name: PKC eta Rabbit Monoclonal Antibody
Catalog #: AMRe02447

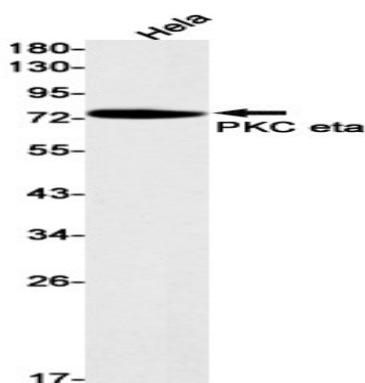


PKC is activated by diacylglycerol which in turn phosphorylates a range of cellular proteins. PKC also serves as the receptor for phorbol esters, a class of tumor promoters.

Research Area

Signal Transduction

Image Data



Western blot analysis of PKC eta in HeLa lysates using PKC eta antibody.

Note

For research use only.