

Summary

Production Name	PIN1 Rabbit Monoclonal Antibody
Description	Recombinant Rabbit Monoclonal antibody
Host	Rabbit
Application	WB,IHC-F,IHC-P,ICC/IF,IP
Reactivity	Human,Mouse,Rat,Hamster

Performance

Conjugation	Unconjugated
Modification	Unmodified
Isotype	IgG
Clonality	Monoclonal Antibody
Form	Liquid
Storage	Store at 4°C short term. Aliquot and store at -20°C long term. Avoid freeze/thaw cycles.
Buffer	50mM Tris-Glycine(pH 7.4), 0.15M NaCl, 40% Glycerol, 0.01% Sodium azide and 0.05% BSA
Purification	Affinity Purified

Immunogen

Gene Name	PIN1
Alternative Names	DOD; UBL5
Gene ID	5300
SwissProt ID	Q13526

Application

Dilution Ratio	WB: 1/500-1/1000 IHC: 1/50-1/100 IF: 1/50-1/200 IP: 1/20
Molecular Weight	Calculated MW: 18 kDa; Observed MW: 18 kDa

Background

Product Name: PIN1 Rabbit Monoclonal Antibody
Catalog #: AMRe02442

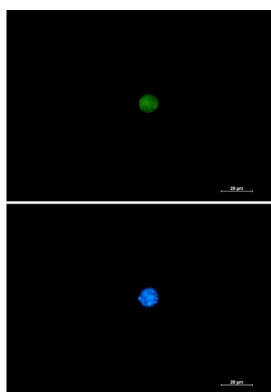


Peptidyl-prolyl cis/trans isomerases (PPlases) catalyze the cis/trans isomerization of peptidyl-prolyl peptide bonds. This gene encodes one of the PPlases, which specifically binds to phosphorylated ser/thr-pro motifs to catalytically regulate the post-phosphorylation conformation of its substrates. The conformational regulation catalyzed by this PPIase has a profound impact on key proteins involved in the regulation of cell growth, genotoxic and other stress responses, the immune response, induction and maintenance of pluripotency, germ cell development, neuronal differentiation, and survival.

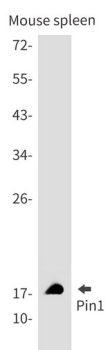
Research Area

Neuroscience

Image Data

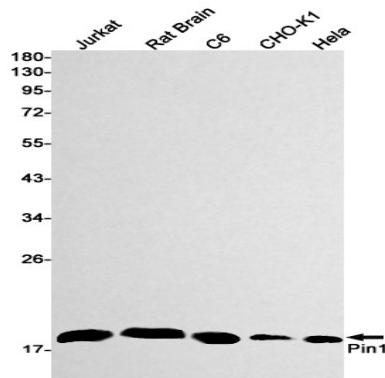


Immunocytochemistry analysis of PIN1 (green) in 293 using PIN1 antibody, and DAPI (blue).

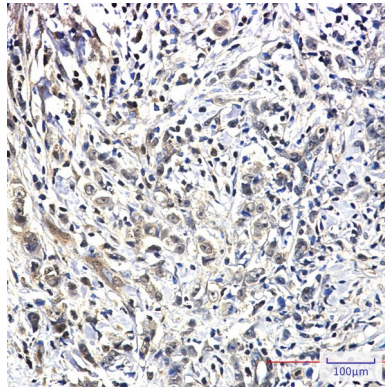


Western blot analysis of Pin1 in mouse spleen lysates using Pin1 antibody.

Product Name: PIN1 Rabbit Monoclonal Antibody
Catalog #: AMRe02442



Western blot analysis of Pin1 in Jurkat, rat Brain, C6, CHO-K1, HeLa lysates using Pin1 antibody



Immunohistochemistry analysis of paraffin-embedded Human breast cancer using Pin1 antibody. High-pressure and temperature Sodium Citrate pH 6.0 was used for antigen retrieval.

Note

For research use only.