

Summary

Production Name	MTCO2 Rabbit Monoclonal Antibody
Description	Recombinant Rabbit Monoclonal antibody
Host	Rabbit
Application	WB,IHC-F,IHC-P,ICC/IF,IP
Reactivity	Human

Performance

Conjugation	Unconjugated
Modification	Unmodified
Isotype	IgG
Clonality	Monoclonal Antibody
Form	Liquid
Storage	Store at 4°C short term. Aliquot and store at -20°C long term. Avoid freeze/thaw cycles.
Buffer	50mM Tris-Glycine(pH 7.4), 0.15M NaCl, 40% Glycerol, 0.01% Sodium azide and 0.05% BSA
Purification	Affinity Purified

Immunogen

Gene Name	MT-CO2
Alternative Names	MT-CO2; COX2; CO2; Cytochrome c oxidase II; MTCO2; COII; COXII
Gene ID	4513
SwissProt ID	P00403

Application

Dilution Ratio	WB: 1/500-1/1000 IHC: 1/50-1/100 IF: 1/50-1/200 IP: 1/20
Molecular Weight	Calculated MW: 26 kDa; Observed MW: 21 kDa

Background

Product Name: MTCO2 Rabbit Monoclonal Antibody
Catalog #: AMRe02280

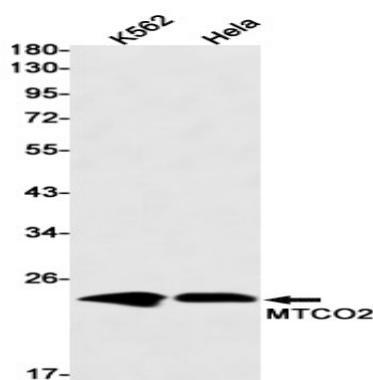


Cytochrome c oxidase is the component of the respiratory chain that catalyzes the reduction of oxygen to water. Subunits 1-3 form the functional core of the enzyme complex. Subunit 2 transfers the electrons from cytochrome c via its binuclear copper A center to the bimetallic center of the catalytic subunit 1.

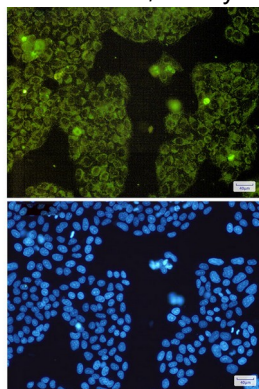
Research Area

Signal Transduction

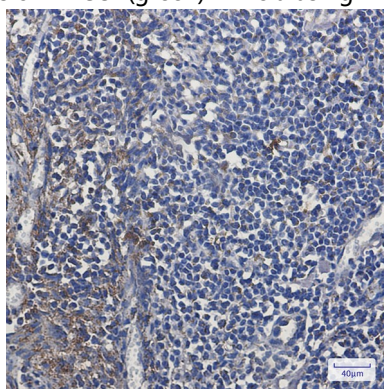
Image Data



Western blot analysis of MTCO2 in K562, HeLa lysates using MTCO2 antibody.



Immunocytochemistry analysis of MTCO2(green) in HeLa using MTCO2 antibody, and DAPI(blue)



Immunohistochemistry analysis of paraffin-embedded Human tonsil using MTCO2 antibody. High-pressure and temperature

Product Name: MTCO2 Rabbit Monoclonal Antibody
Catalog #: AMRe02280



Sodium Citrate pH 6.0 was used for antigen retrieval.

Note

For research use only.