

**Product Name: MMP12 Rabbit Monoclonal Antibody**  
**Catalog #: AMRe02263**



## Summary

<b>Production Name</b>	MMP12 Rabbit Monoclonal Antibody
<b>Description</b>	Recombinant Rabbit Monoclonal antibody
<b>Host</b>	Rabbit
<b>Application</b>	WB,IP
<b>Reactivity</b>	Human,Rat,Hamster

## Performance

<b>Conjugation</b>	Unconjugated
<b>Modification</b>	Unmodified
<b>Isotype</b>	IgG
<b>Clonality</b>	Monoclonal Antibody
<b>Form</b>	Liquid
<b>Storage</b>	Store at 4°C short term. Aliquot and store at -20°C long term. Avoid freeze/thaw cycles.
<b>Buffer</b>	50mM Tris-Glycine(pH 7.4), 0.15M NaCl, 40% Glycerol, 0.01% Sodium azide and 0.05% BSA
<b>Purification</b>	Affinity Purified

## Immunogen

<b>Gene Name</b>	MMP12
<b>Alternative Names</b>	Macrophage metalloelastase; MME; 3.4.24.65; Macrophage elastase; ME; hME; Matrix metalloproteinase-12; MMP-12; MMP12; HME
<b>Gene ID</b>	4321
<b>SwissProt ID</b>	P39900

## Application

<b>Dilution Ratio</b>	WB: 1/500-1/1000 IP: 1/20
<b>Molecular Weight</b>	Calculated MW: 54 kDa; Observed MW: 54,45 kDa

**Product Name: MMP12 Rabbit Monoclonal Antibody**  
**Catalog #: AMRe02263**



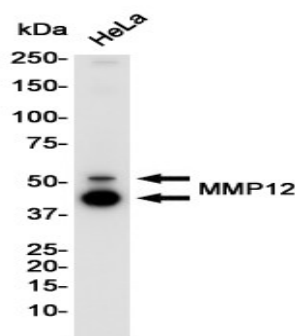
## Background

MMP-12 lacks a transmembrane domain and furin cleavage site. The zymogen for MMP-12 is about 54 kDa, and is quickly activated to the 45 kDa form, and this breaks down to cascade of active forms, ending with the common 22 kDa form. Stimulated macrophages produce MMP-12; it has also been found in osteosarcoma cells, synovial fibroblasts and lung fibroblasts.

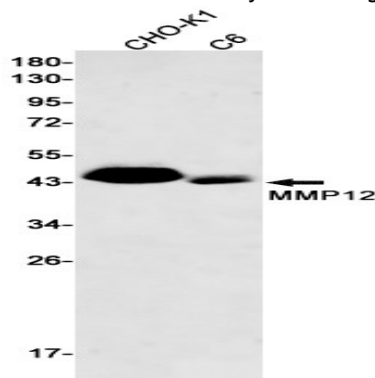
## Research Area

Cardiovascular

## Image Data



Western blot analysis of MMP12 in HeLa lysates using MMP12 antibody.



Western blot analysis of MMP12 in CHO-K1, C6 lysates using MMP12 antibody.

## Note

For research use only.