
Summary

Production Name	MAT1A Rabbit Monoclonal Antibody
Description	Recombinant Rabbit Monoclonal antibody
Host	Rabbit
Application	WB,IP
Reactivity	Human,Mouse,Rat

Performance

Conjugation	Unconjugated
Modification	Unmodified
Isotype	IgG
Clonality	Monoclonal Antibody
Form	Liquid
Storage	Store at 4°C short term. Aliquot and store at -20°C long term. Avoid freeze/thaw cycles.
Buffer	50mM Tris-Glycine(pH 7.4), 0.15M NaCl, 40% Glycerol, 0.01% Sodium azide and 0.05% BSA
Purification	Affinity Purified

Immunogen

Gene Name	MAT1A
Alternative Names	MAT; SAMS; MATA1; SAMS1; MAT1A
Gene ID	4143
SwissProt ID	Q00266

Application

Dilution Ratio	WB: 1/500-1/1000 IP: 1/20
Molecular Weight	Calculated MW: 44 kDa; Observed MW: 44 kDa

Background

Product Name: MAT1A Rabbit Monoclonal Antibody
Catalog #: AMRe02232

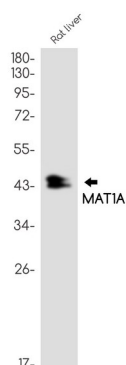


This gene catalyzes a two-step reaction that involves the transfer of the adenosyl moiety of ATP to methionine to form S-adenosylmethionine and triphosphosphate, which is subsequently cleaved to PPi and Pi. S-adenosylmethionine is the source of methyl groups for most biological methylations. The encoded protein is found as a homotetramer (MAT I) or a homodimer (MAT III) whereas a third form, MAT II (gamma), is encoded by the MAT2A gene. Mutations in this gene are associated with methionine adenosyltransferase deficiency.

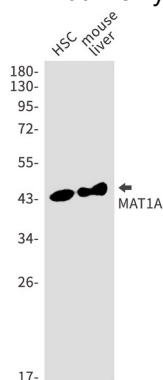
Research Area

Signal Transduction

Image Data



Western blot analysis of MAT1A in rat liver lysates using MAT1A antibody.



Western blot analysis of MAT1A in HSC, mouse liver lysates using MAT1A antibody.

Note

For research use only.