

Summary

Production Name	LYVE1 Rabbit Monoclonal Antibody
Description	Recombinant Rabbit Monoclonal antibody
Host	Rabbit
Application	WB,IHC-P,IP
Reactivity	Human,Mouse

Performance

Conjugation	Unconjugated
Modification	Unmodified
Isotype	IgG
Clonality	Monoclonal Antibody
Form	Liquid
Storage	Store at 4°C short term. Aliquot and store at -20°C long term. Avoid freeze/thaw cycles.
Buffer	50mM Tris-Glycine(pH 7.4), 0.15M NaCl, 40% Glycerol, 0.01% Sodium azide and 0.05% BSA
Purification	Affinity Purified

Immunogen

Gene Name	Lyve1
Alternative Names	CRSBP-1; Extracellular link domain-containing protein 1
Gene ID	114332.0
SwissProt ID	Q8BHCO

Application

Dilution Ratio	WB: 1/500-1/1000 IHC: 1/50-1/100 IP: 1/20
Molecular Weight	Calculated MW: 35 kDa; Observed MW: 35-70 kDa

Background

Product Name: LYVE1 Rabbit Monoclonal Antibody
Catalog #: AMRe02224

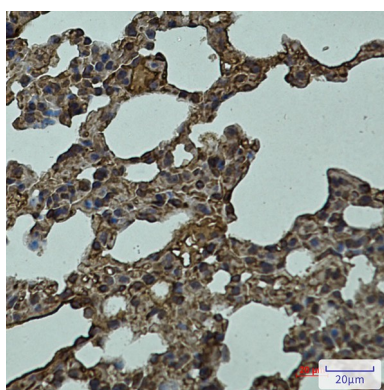


Ligand-specific transporter trafficking between intracellular organelles (TGN) and the plasma membrane. Plays a role in autocrine regulation of cell growth mediated by growth regulators containing cell surface retention sequence binding (CRS).

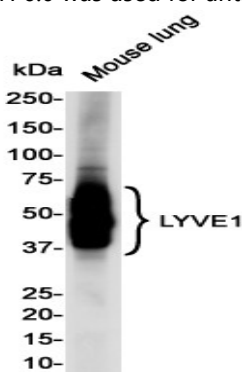
Research Area

Cardiovascular

Image Data



Immunohistochemistry analysis of paraffin-embedded mouse lung using LYVE1 antibody. High-pressure and temperature Sodium Citrate pH 6.0 was used for antigen retrieval.



Western blot analysis of LYVE1 in mouse Lung lysates using LYVE1 antibody.

Note

For research use only.