
Summary

Production Name	KIFC1 Rabbit Monoclonal Antibody
Description	Recombinant Rabbit Monoclonal antibody
Host	Rabbit
Application	WB,IHC-F,IHC-P,ICC/IF,IP
Reactivity	Human,Mouse

Performance

Conjugation	Unconjugated
Modification	Unmodified
Isotype	IgG
Clonality	Monoclonal Antibody
Form	Liquid
Storage	Store at 4°C short term. Aliquot and store at -20°C long term. Avoid freeze/thaw cycles.
Buffer	50mM Tris-Glycine(pH 7.4), 0.15M NaCl, 40% Glycerol, 0.01% Sodium azide and 0.05% BSA
Purification	Affinity Purified

Immunogen

Gene Name	KIFC1
Alternative Names	HSET; KNSL2
Gene ID	3833
SwissProt ID	Q9BW19

Application

Dilution Ratio	WB: 1/500-1/1000 IHC: 1/50-1/100 IF: 1/50-1/200 IP: 1/20
Molecular Weight	Calculated MW: 74 kDa; Observed MW: 74 kDa

Background

Product Name: KIFC1 Rabbit Monoclonal Antibody
Catalog #: AMRe02194

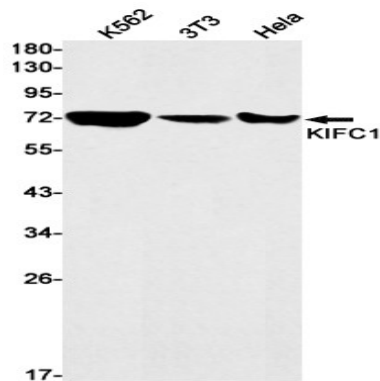


Minus end-directed microtubule-dependent motor required for bipolar spindle formation. May contribute to movement of early endocytic vesicles.

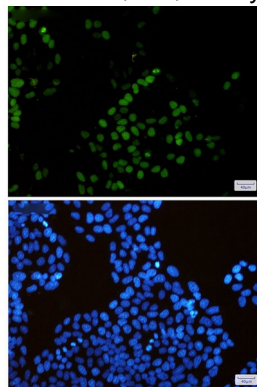
Research Area

Signal Transduction

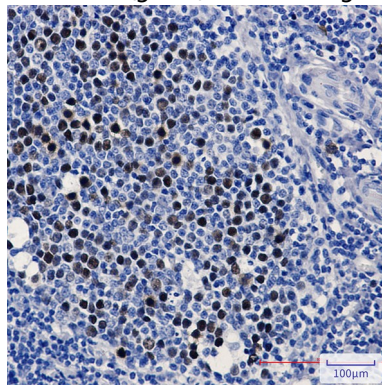
Image Data



Western blot analysis of KIFC1 in K562, 3T3, HeLa lysates using KIFC1 antibody.



Immunocytochemistry analysis of KIFC1 (green) in HeLa using KIFC1 antibody, and DAPI (blue)



Immunohistochemistry analysis of paraffin-embedded Human tonsil using KIFC1 antibody. High-pressure and temperature Sodium Citrate pH 6.0 was used for antigen retrieval.

Product Name: KIFC1 Rabbit Monoclonal Antibody
Catalog #: AMRe02194



Note

For research use only.