

Summary

Production Name	HADHA Rabbit Monoclonal Antibody
Description	Recombinant Rabbit Monoclonal antibody
Host	Rabbit
Application	WB,IHC-F,IHC-P,ICC/IF,IP
Reactivity	Human,Mouse,Rat

Performance

Conjugation	Unconjugated
Modification	Unmodified
Isotype	IgG
Clonality	Monoclonal Antibody
Form	Liquid
Storage	Store at 4°C short term. Aliquot and store at -20°C long term. Avoid freeze/thaw cycles.
Buffer	50mM Tris-Glycine(pH 7.4), 0.15M NaCl, 40% Glycerol, 0.01% Sodium azide and 0.05% BSA
Purification	Affinity Purified

Immunogen

Gene Name	HADHA
Alternative Names	GBP; ECHA; HADH; LCEH; MTPA; LCHAD; TP-ALPHA
Gene ID	3030
SwissProt ID	P40939

Application

Dilution Ratio	WB: 1/500-1/1000 IHC: 1/50-1/100 IF: 1/50-1/200 IP: 1/20
Molecular Weight	Calculated MW: 83 kDa; Observed MW: 78 kDa

Background

Product Name: HADHA Rabbit Monoclonal Antibody
Catalog #: AMRe02068

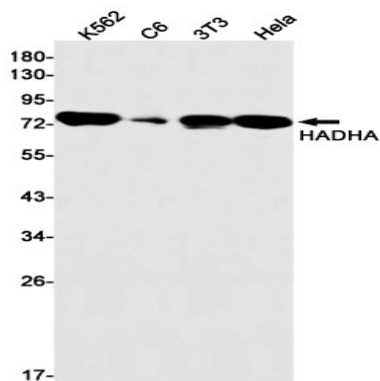


Mitochondrial trifunctional enzyme catalyzes the last three of the four reactions of the mitochondrial beta-oxidation pathway.

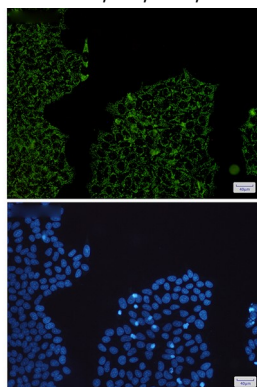
Research Area

Tags & Cell Markers

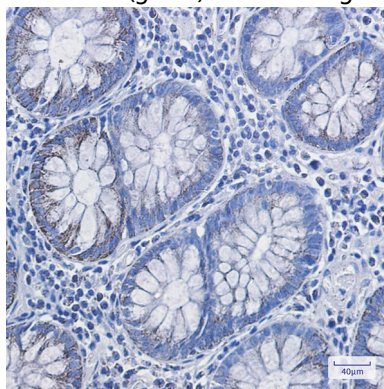
Image Data



Western blot analysis of HADHA in K562, C6, 3T3, HeLa lysates using HADHA antibody.



Immunocytochemistry analysis of HADHA (green) in HeLa using HADHA antibody, and DAPI (blue)



Immunohistochemistry analysis of paraffin-embedded Human colon cancer using HADHA antibody. High-pressure and temperature Sodium Citrate pH 6.0 was used for antigen retrieval.

Product Name: HADHA Rabbit Monoclonal Antibody
Catalog #: AMRe02068



Note

For research use only.