

**Product Name: GST3 Rabbit Monoclonal Antibody**  
**Catalog #: AMRe02066**



## Summary

<b>Production Name</b>	GST3 Rabbit Monoclonal Antibody
<b>Description</b>	Recombinant Rabbit Monoclonal antibody
<b>Host</b>	Rabbit
<b>Application</b>	WB,IHC-P
<b>Reactivity</b>	Human

## Performance

<b>Conjugation</b>	Unconjugated
<b>Modification</b>	Unmodified
<b>Isotype</b>	IgG
<b>Clonality</b>	Monoclonal Antibody
<b>Form</b>	Liquid
<b>Storage</b>	Store at 4°C short term. Aliquot and store at -20°C long term. Avoid freeze/thaw cycles.
<b>Buffer</b>	50mM Tris-Glycine(pH 7.4), 0.15M NaCl, 40% Glycerol, 0.01% Sodium azide and 0.05% BSA
<b>Purification</b>	Affinity Purified

## Immunogen

<b>Gene Name</b>	GSTP1
<b>Alternative Names</b>	GSTP1; FAES3; GST3; Glutathione S-transferase P; GST class-pi; GSTP1-1
<b>Gene ID</b>	2950
<b>SwissProt ID</b>	P09211

## Application

<b>Dilution Ratio</b>	WB: 1/500-1/1000 IHC: 1/50-1/100
<b>Molecular Weight</b>	Calculated MW: 23 kDa; Observed MW: 23 kDa

## Background

**Product Name: GST3 Rabbit Monoclonal Antibody**  
**Catalog #: AMRe02066**

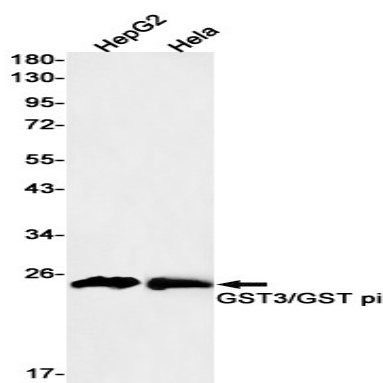


Conjugation of reduced glutathione to a wide number of exogenous and endogenous hydrophobic electrophiles.

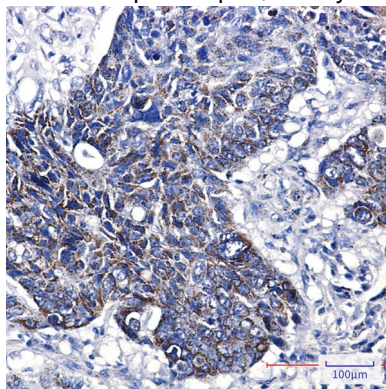
## Research Area

Cardiovascular

## Image Data



Western blot analysis of GST3/GST pi in HepG2, HeLa lysates using GST3 antibody.



Immunohistochemistry analysis of paraffin-embedded Human lung cancer using GST3/GST pi antibody. High-pressure and temperature Sodium Citrate pH 6.0 was used for antigen retrieval.

## Note

For research use only.