

---

## Summary

<b>Production Name</b>	GNE Rabbit Monoclonal Antibody
<b>Description</b>	Recombinant Rabbit Monoclonal antibody
<b>Host</b>	Rabbit
<b>Application</b>	WB,IP
<b>Reactivity</b>	Human

## Performance

<b>Conjugation</b>	Unconjugated
<b>Modification</b>	Unmodified
<b>Isotype</b>	IgG
<b>Clonality</b>	Monoclonal Antibody
<b>Form</b>	Liquid
<b>Storage</b>	Store at 4°C short term. Aliquot and store at -20°C long term. Avoid freeze/thaw cycles.
<b>Buffer</b>	50mM Tris-Glycine(pH 7.4), 0.15M NaCl, 40% Glycerol, 0.01% Sodium azide and 0.05% BSA
<b>Purification</b>	Affinity Purified

## Immunogen

<b>Gene Name</b>	GNE
<b>Alternative Names</b>	NM; DMRV; IBM2; Uae1; GLCNE
<b>Gene ID</b>	10020
<b>SwissProt ID</b>	Q9Y223

## Application

<b>Dilution Ratio</b>	WB: 1/500-1/1000 IP: 1/20
<b>Molecular Weight</b>	Calculated MW: 79 kDa; Observed MW: 75 kDa

## Background

---

**Product Name: GNE Rabbit Monoclonal Antibody**  
**Catalog #: AMRe02035**

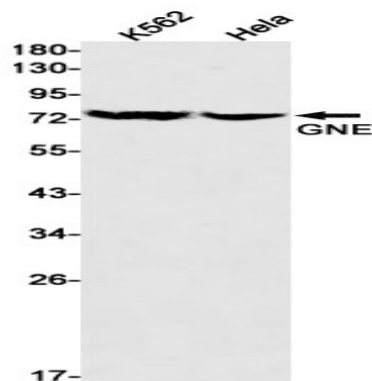


Regulates and initiates biosynthesis of N-acetylneuraminic acid (NeuAc), a precursor of sialic acids. Plays an essential role in early development . Required for normal sialylation in hematopoietic cells. Sialylation is implicated in cell adhesion, signal transduction, tumorigenicity and metastatic behavior of malignant cells.

## Research Area

Cardiovascular

## Image Data



Western blot analysis of GNE in K562, HeLa lysates using GNE antibody.

## Note

For research use only.