

**Product Name: Extracellular Matrix Protein 1 Rabbit
Monoclonal Antibody
Catalog #: AMRe01965**



Summary

Production Name	Extracellular Matrix Protein 1 Rabbit Monoclonal Antibody
Description	Recombinant Rabbit Monoclonal antibody
Host	Rabbit
Application	WB,IHC-F,IHC-P,ICC/IF,IP
Reactivity	Human

Performance

Conjugation	Unconjugated
Modification	Unmodified
Isotype	IgG
Clonality	Monoclonal Antibody
Form	Liquid
Storage	Store at 4°C short term. Aliquot and store at -20°C long term. Avoid freeze/thaw cycles.
Buffer	50mM Tris-Glycine(pH 7.4), 0.15M NaCl, 40% Glycerol, 0.01% Sodium azide and 0.05% BSA
Purification	Affinity Purified

Immunogen

Gene Name	ECM1
Alternative Names	ECM1; Extracellular matrix protein 1; Secretory component p85
Gene ID	1893
SwissProt ID	Q16610

Application

Dilution Ratio	WB: 1/500-1/1000 IHC: 1/50-1/100 IF: 1/50-1/200 IP: 1/20
Molecular Weight	Calculated MW: 61 kDa; Observed MW: 61 kDa

**Product Name: Extracellular Matrix Protein 1 Rabbit
Monoclonal Antibody
Catalog #: AMRe01965**



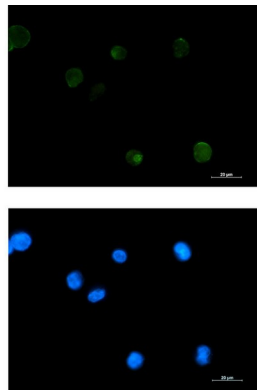
Background

Involved in endochondral bone formation as negative regulator of bone mineralization. Stimulates the proliferation of endothelial cells and promotes angiogenesis. Inhibits MMP9 proteolytic activity.

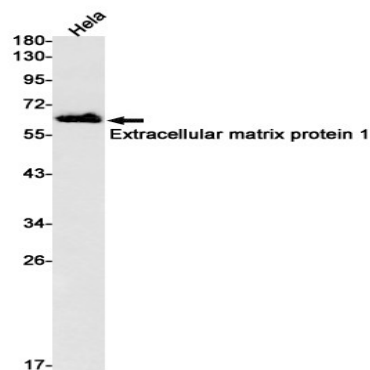
Research Area

Immunology

Image Data

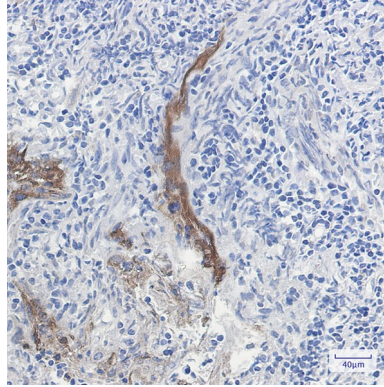


Immunocytochemistry analysis of Extracellular Matrix Protein 1 (green) in K562 using Extracellular Matrix Protein 1 antibody, and DAPI (blue).



Western blot analysis of Extracellular matrix protein 1 in HeLa lysates using Extracellular matrix protein 1 antibody.

**Product Name: Extracellular Matrix Protein 1 Rabbit
Monoclonal Antibody
Catalog #: AMRe01965**



Immunohistochemistry analysis of paraffin-embedded Human tonsil using Extracellular matrix protein 1 antibody. High-pressure and temperature Sodium Citrate pH 6.0 was used for antigen retrieval.

Note

For research use only.