

**Product Name: Estrogen Receptor alpha Rabbit
Monoclonal Antibody
Catalog #: AMRe01960**

Summary

Production Name	Estrogen Receptor alpha Rabbit Monoclonal Antibody
Description	Recombinant Rabbit Monoclonal antibody
Host	Rabbit
Application	WB,IHC-F,IHC-P,ICC/IF,IP,ChIP
Reactivity	Human

Performance

Conjugation	Unconjugated
Modification	Unmodified
Isotype	IgG
Clonality	Monoclonal Antibody
Form	Liquid
Storage	Store at 4°C short term. Aliquot and store at -20°C long term. Avoid freeze/thaw cycles.
Buffer	50mM Tris-Glycine(pH 7.4), 0.15M NaCl, 40% Glycerol, 0.01% Sodium azide and 0.05% BSA
Purification	Affinity Purified

Immunogen

Gene Name	ESR1
Alternative Names	ESR1; Era; Eralpha; Estrogen receptor; Estradiol receptor; ER-alpha; Estrogen receptor 1; NR3A1; ER; ESR; ESRA; Estrogen receptor alpha
Gene ID	2099
SwissProt ID	P03372

Application

Dilution Ratio	WB: 1/500-1/1000 IHC: 1/50-1/100 IF: 1/50-1/200 IP: 1/20 ChIP: 1/20
Molecular Weight	Calculated MW: 66 kDa; Observed MW: 66 kDa

**Product Name: Estrogen Receptor alpha Rabbit
Monoclonal Antibody
Catalog #: AMRe01960**

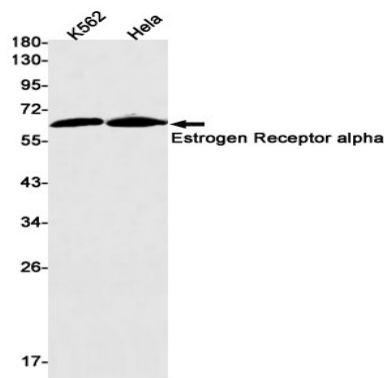
Background

ER (estrogen receptor 1) a member of the steroid receptor superfamily, contains highly conserved DNA binding (DBD) and ligand binding domains (LBD). Through its estrogen-independent and estrogen-dependent activation domains (AF-1 and AF-2, respectively), ER regulates transcription by recruiting coactivator proteins and interacting with general transcriptional machinery. Phosphorylation provides an important mechanism to regulate ER activity. ER is phosphorylated on multiple sites.

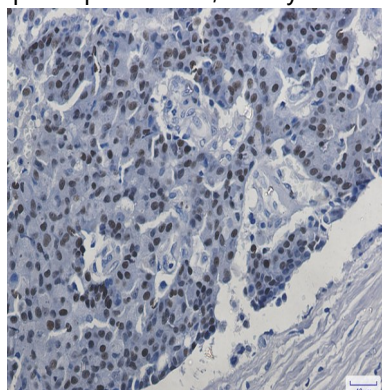
Research Area

Signal Transduction

Image Data

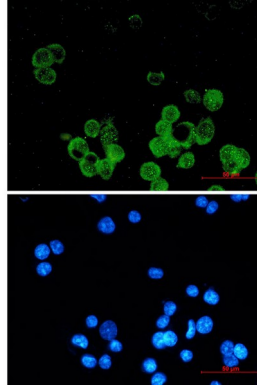


Western blot analysis of Estrogen Receptor alpha in K562, HeLa lysates using Estrogen Receptor alpha antibody.



Immunohistochemistry analysis of paraffin-embedded Human breast cancer using Estrogen Receptor alpha antibody. High-pressure and temperature Sodium Citrate pH 6.0 was used for antigen retrieval.

**Product Name: Estrogen Receptor alpha Rabbit
Monoclonal Antibody
Catalog #: AMRe01960**



Immunocytochemistry analysis of Estrogen Receptor alpha (green) in MCF-7 using Estrogen Receptor alpha antibody, and DAPI(blue)

Note

For research use only.