
Summary

Production Name	Epac1 Rabbit Monoclonal Antibody
Description	Recombinant Rabbit Monoclonal antibody
Host	Rabbit
Application	WB,IP
Reactivity	Human,Mouse

Performance

Conjugation	Unconjugated
Modification	Unmodified
Isotype	IgG
Clonality	Monoclonal Antibody
Form	Liquid
Storage	Store at 4°C short term. Aliquot and store at -20°C long term. Avoid freeze/thaw cycles.
Buffer	50mM Tris-Glycine(pH 7.4), 0.15M NaCl, 40% Glycerol, 0.01% Sodium azide and 0.05% BSA
Purification	Affinity Purified

Immunogen

Gene Name	RAPGEF3 RAPGEF3; CGEF1; EPAC; EPAC1; Rap guanine nucleotide exchange factor 3; Exchange factor directly activated by cAMP 1; Exchange protein directly activated by cAMP 1;
Alternative Names	EPAC 1; Rap1 guanine-nucleotide-exchange factor directly activated by cAMP
Gene ID	10411
SwissProt ID	O95398

Application

Dilution Ratio	WB: 1/500-1/1000 IP: 1/20
Molecular Weight	Calculated MW: 104 kDa; Observed MW: 104 kDa

Product Name: Epac1 Rabbit Monoclonal Antibody
Catalog #: AMRe01952



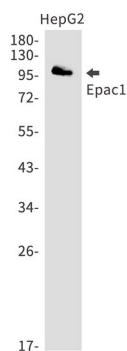
Background

The activation of RaP1 by cAMP is independent of PKA and is mediated by recently discovered family of guanine nucleotide exchange factors (GEFs) called cAMP-GEFs or Epacs. The Epac signaling therefore represents a novel mechanism for cAMP signaling with in the cAMP cascade.

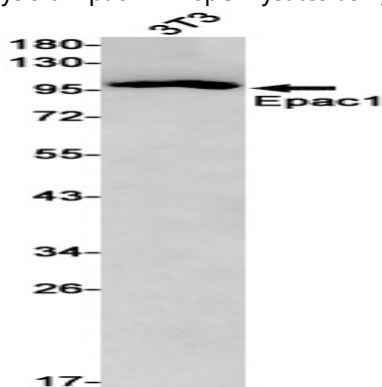
Research Area

Signal Transduction

Image Data



Western blot analysis of Epac1 in HepG2 lysates using Epac1 antibody.



Western blot analysis of Epac1 in 3T3 lysates using Epac1 antibody.

Note

For research use only.