

---

## Summary

<b>Production Name</b>	ELK1 Rabbit Monoclonal Antibody
<b>Description</b>	Recombinant Rabbit Monoclonal antibody
<b>Host</b>	Rabbit
<b>Application</b>	WB,IHC-P,IP,ChIP
<b>Reactivity</b>	Human

## Performance

<b>Conjugation</b>	Unconjugated
<b>Modification</b>	Unmodified
<b>Isotype</b>	IgG
<b>Clonality</b>	Monoclonal Antibody
<b>Form</b>	Liquid
<b>Storage</b>	Store at 4°C short term. Aliquot and store at -20°C long term. Avoid freeze/thaw cycles.
<b>Buffer</b>	50mM Tris-Glycine(pH 7.4), 0.15M NaCl, 40% Glycerol, 0.01% Sodium azide and 0.05% BSA
<b>Purification</b>	Affinity Purified

## Immunogen

<b>Gene Name</b>	ELK1
<b>Alternative Names</b>	ETS domain-containing protein Elk-1
<b>Gene ID</b>	2002
<b>SwissProt ID</b>	P19419

## Application

<b>Dilution Ratio</b>	WB: 1/500-1/1000 IHC: 1/50-1/100 IP: 1/20 ChIP: 1/20
<b>Molecular Weight</b>	Calculated MW: 45 kDa; Observed MW: 62 kDa

## Background

---

**Product Name: ELK1 Rabbit Monoclonal Antibody**  
**Catalog #: AMRe01942**

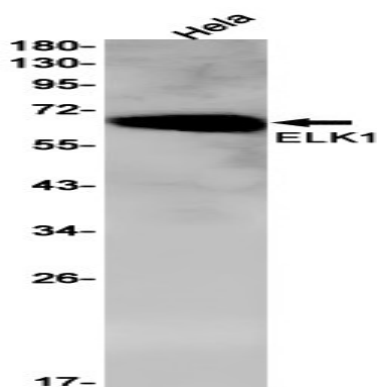


This gene is a member of the Ets family of transcription factors and of the ternary complex factor (TCF) subfamily. Proteins of the TCF subfamily form a ternary complex by binding to the the serum response factor and the serum reponse element in the promoter of the c-fos proto-oncogene. The protein encoded by this gene is a nuclear target for the ras-raf-MAPK signaling cascade.

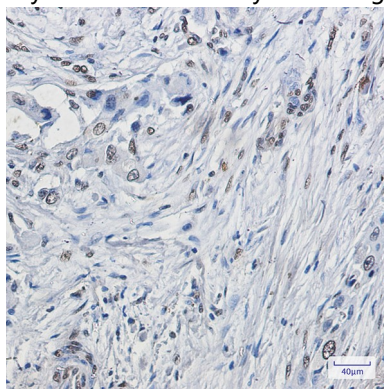
## Research Area

Signal Transduction

## Image Data



Western blot analysis of ELK1 in HeLa lysates using ELK1 antibody.



Immunohistochemistry analysis of paraffin-embedded Human lung cancer using ELK1 antibody. High-pressure and temperature Sodium Citrate pH 6.0 was used for antigen retrieval.

## Note

For research use only.