

Summary

Production Name	eIF1A Rabbit Monoclonal Antibody
Description	Recombinant Rabbit Monoclonal antibody
Host	Rabbit
Application	WB,IHC-F,IHC-P,ICC/IF,IP
Reactivity	Human,Mouse,Rat

Performance

Conjugation	Unconjugated
Modification	Unmodified
Isotype	IgG
Clonality	Monoclonal Antibody
Form	Liquid
Storage	Store at 4°C short term. Aliquot and store at -20°C long term. Avoid freeze/thaw cycles.
Buffer	50mM Tris-Glycine(pH 7.4), 0.15M NaCl, 40% Glycerol, 0.01% Sodium azide and 0.05% BSA
Purification	Affinity Purified

Immunogen

Gene Name	EIF1AX
Alternative Names	EIF1A; EIF4C; eIF-1A; eIF-4C; EIF1AP1
Gene ID	1964
SwissProt ID	P47813

Application

Dilution Ratio	WB: 1/500-1/1000 IHC: 1/50-1/100 IF: 1/50-1/200 IP: 1/20
Molecular Weight	Calculated MW: 16 kDa; Observed MW: 16 kDa

Background

Product Name: eIF1A Rabbit Monoclonal Antibody
Catalog #: AMRe01934

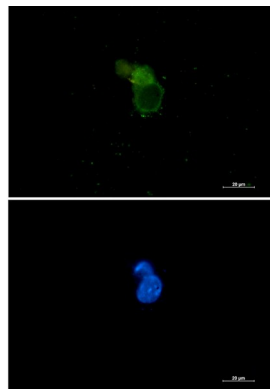


Seems to be required for maximal rate of protein biosynthesis. Enhances ribosome dissociation into subunits and stabilizes the binding of the initiator Met-tRNA(I) to 40 S ribosomal subunits.

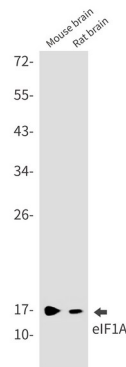
Research Area

Epigenetics and Nuclear Signaling

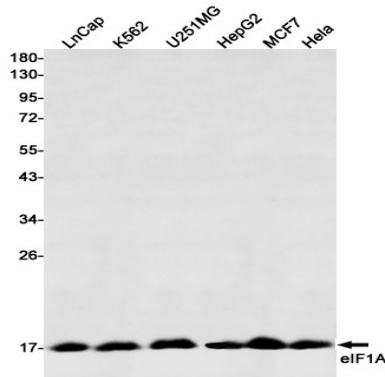
Image Data



Immunocytochemistry analysis of eIF1A (green) in 293 using eIF1A antibody, and DAPI (blue).

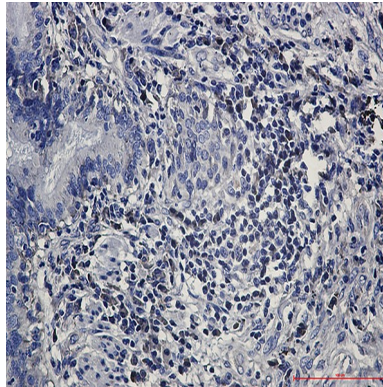


Western blot analysis of eIF1A in mouse brain, rat brain lysates using eIF1A antibody.



Western blot analysis of eIF1A in LnCap, K562, U251MG, HepG2, MCF-7, HeLa lysates using eIF1A antibody

Product Name: eIF1A Rabbit Monoclonal Antibody
Catalog #: AMRe01934



Immunohistochemistry analysis of paraffin-embedded Human lung cancer using eIF1A antibody. High-pressure and temperature Sodium Citrate pH 6.0 was used for antigen retrieval.

Note

For research use only.